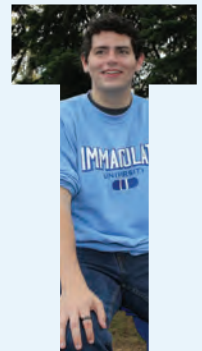




**IMMACULATA  
UNIVERSITY**

# *A MIGHTY*



**HONOR ROLL OF DONORS**  
July 1, 2021–June 30, 2022

*A Publication From Institutional Advancement*





**MAKE**



*YOUR*



**IMPACT**







## DEAR ALUMNI & FRIENDS OF IMMACULATA,

The end of the fiscal year is a perfect time to evaluate the “state of the college” and I am pleased to report that Immaculata is doing very well, thanks to many of you.

As you review the *Honor Roll of Donors* for fiscal year 2021–2022, I hope you recognize the impact that Immaculata University is making on our students. As you explore the information contained in this report, I think you will be incredibly pleased. It showcases how the IU community supports our students by strengthening their college experience. Top-notch faculty, state-of-the-art facilities, and engaging activities foster leadership skills which allow our students to develop and excel in numerous areas.

In October, Immaculata celebrated its Centennial with a party, the likes of which I am sure I will never witness again on our beautiful campus. To coincide with the 100th anniversary, Immaculata launched the Centennial Scholarship. One of the recipients of this scholarship is Maeve Touhey '23, a fashion merchandising major. Touhey expressed how the scholarship positively impacts her academic life because it provides her with financial security.

A few student video testimonials are shared via QR codes in this *Honor Roll of Donors*. They explain that the impact of receiving financial aid/scholarships is profound. These testimonials are coming directly from our students, and their heartfelt appreciation is deeply sincere.

The impact of FY22 donations will be amplified with the creation of an applied technology and cybersecurity laboratory which will open in the fall 2022. Then, a Bloomberg-like business lab will be ready this coming January. These two new spaces will broaden student exploration in these fields and prepare them for professional careers.

As we begin our fall semester, I take pride in all our students and am grateful that my fellow Immaculatans are supporting them. I am very grateful for your support and generosity.

Sincerely,

A handwritten signature in black ink that reads "Barbara Lettiere". The signature is fluid and cursive, with a large initial "B".

**Barbara Lettiere '72, President**



**Picture:** The IU Centennial Celebration

# AN IMMACULATA OVERVIEW

## MISSION STATEMENT

Immaculata University, a Catholic academic community, founded and sponsored by the Sisters, Servants of the Immaculate Heart of Mary, is committed to scholarship, formation of the whole person for leadership and service, and empowerment of all to seek truth, promote justice, and engage in dialogue between faith and culture.

## COLLEGE OF UNDERGRADUATE STUDIES

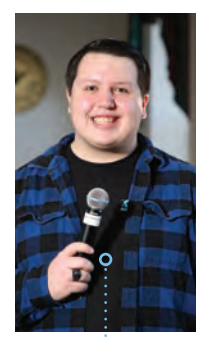
The College of Undergraduate Studies (CUS) serves undergraduate men and women studying full time. Students may participate in the complete undergraduate college experience including athletics, residential campus life, and student clubs and organizations.

## COLLEGE OF ADULT PROFESSIONAL STUDIES

The College of Adult Professional Studies (CAPS) provides flexible programs for adults seeking undergraduate degree completion and expanded career opportunities. Formerly the College of LifeLong Learning, CAPS educates students on and off campus, in face-to-face and online learning environments.

## COLLEGE OF GRADUATE STUDIES

The College of Graduate Studies (CGS) offers several highly respected master's and doctoral programs in education, management, nursing, music therapy, nutrition and psychology. With a faculty of scholar-practitioners and strong relationships with area businesses, hospitals, and school districts, Immaculata's graduate programs are synonymous with excellence and professionalism.



*IU was my first-choice college. These scholarships have immensely helped me because I knew this is where I wanted to go, and I feel like without the help of my scholarships, my family would struggle to put me through college.*

*I thank all of the donors who make these scholarships possible. Honestly, I don't think you understand the impact it has on students like me. It's truly a blessing that I couldn't get through college without, so I am deeply and truly appreciative of everything that's been contributed."*

### JOE BILLETTA '22

*Digital Communications* | **Activities:** Mac the Mascot, Cue & Curtain Theatre, Delta Pi Fraternity

**SCAN BELOW TO HEAR JOE'S STORY**



## COST OF EDUCATION

Continuing our commitment to making a quality education affordable, Immaculata’s tuition will remain unchanged for the third year, for the 2022–2023 academic year. More than 98% of our students receive financial aid. Last year, Immaculata awarded more than \$12 million in tuition assistance to accepted full-time freshmen and transfer students. Starting in fall 2022, IU is discounting tuition for most College of Adult Professional Studies programs, further prioritizing higher education affordability for adult learners.

### COLLEGE OF UNDERGRADUATE STUDIES TUITION

#### Academic Year 2022–2023

Full-time Tuition ..... \$26,900\*  
*Up to 18 credits per semester*

### COLLEGE OF ADULT PROFESSIONAL STUDIES TUITION

Tuition for the College of Adult Professional Studies is charged on a per-credit basis.

#### Academic Year 2022–2023

##### TUITION PER CREDIT HOUR

Associate degrees.....\$250\*  
 Accelerated Second Degree Nursing Program .....\$540  
 Bachelor’s degrees .....\$465  
*Discounted tuition for most bachelor’s degree programs*

### COLLEGE OF GRADUATE STUDIES TUITION

Tuition for the College of Graduate Studies is charged on a per-credit basis.

#### Academic Year 2022–2023

##### TUITION PER CREDIT HOUR

Master’s courses ..... \$710\*  
 Ed.D. doctoral courses .....\$955\*  
 Psy.D. doctoral courses.....\$990\*

\* Please note cost for fees, meal plans and housing are not included in the tuition and per-credit rates listed above. Visit our website for additional details: [immaculata.edu/admissions/tuition-fees](http://immaculata.edu/admissions/tuition-fees)

## POINTS OF PRIDE

Immaculata is recognized for the valuable education it provides, its student retention rate, the median salaries of its alumni, and the overall return on investment the University offers.

*Here are some of our most recent accolades, academic highlights, and student accomplishments:*

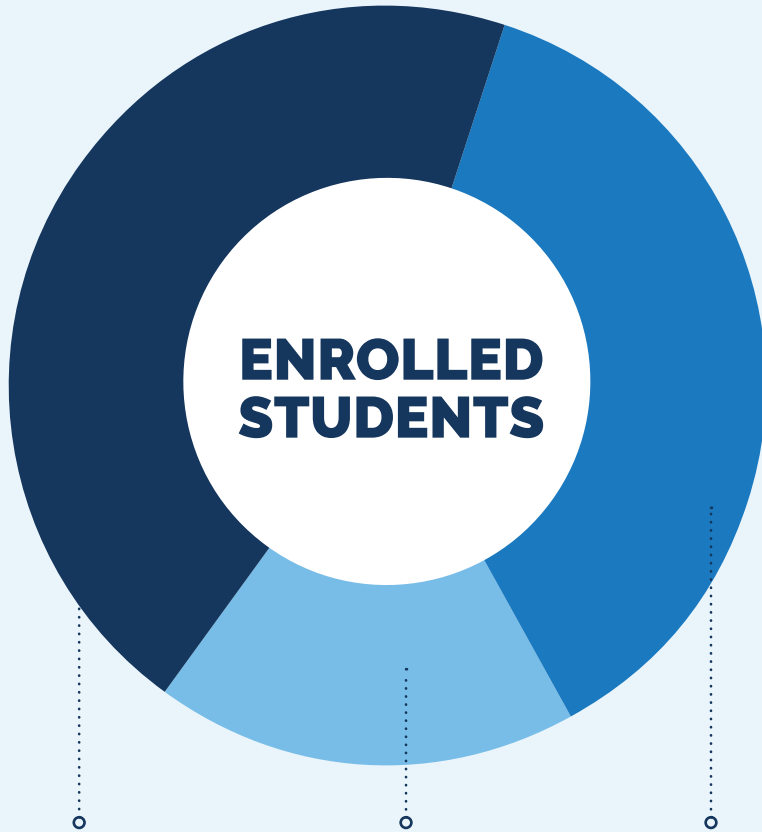
- 94% of the traditional undergraduate class of 2021 was employed, in graduate school, or continuing their education within seven months of graduation. (Based on an 85% knowledge rate).
- 93% of traditional undergraduates completed internships, student teaching, or clinical field experiences.
- Nursing majors achieved a 88.89% NCLEX nursing licensure exam pass rate for 2020–2021. This year, the national average for all nursing students is 83.22% and Pennsylvania is 88.21%.
- For 2022, U.S. News & World Report ranked Immaculata as one of the top national universities, one of the best BSN programs, and one of the top performers on social mobility.
- PayScale ranked Immaculata’s return on investment as the 29th best in Pennsylvania, out of 129 institutions for 2022.
- College Factual named Immaculata #1 in Pennsylvania for Bachelor’s degree in Communication & Journalism (other) for 2022.
- University HQ ranked Immaculata’s Online Bachelor’s Degree Program in Marketing #25 out of 50 programs nationally for 2022.
- For 2022, University HQ ranked Immaculata as one of the Pennsylvania colleges with the Best Bachelor’s and Master’s Degree programs.
- Immaculata had 173 student-athletes named to the Atlantic East Conference Academic All-Conference team for the 2021–2022 academic year. IU ranked fourth in the league in honorees.
- The women’s basketball team won the Atlantic East Conference title in 2022.
- The Immaculata baseball team secured the first Atlantic East Conference title in program history in 2022.



*Pictured: Nursing Simulation Lab Dedication*

## CAMPUS ENHANCEMENTS

- The Parsons Science Pavilion opens in fall 2022
- Three Nursing Simulation Labs were updated in 2022
- The Gabriele Library main level refurbishment project will be completed in fall 2022
- The Applied Technology & Cybersecurity Lab will be completed in fall 2022
- The Business Lab is scheduled for completion in January 2023



**1,128**

Undergraduate Studies

**448**

Adult Professional Studies

**925**

Graduate Studies



male:female ratio



faculty:student ratio

**60+**

Undergraduate Programs

**12+**

Graduate Offerings

**20+**

Certificate & Certification programs

**35+**

Clubs & Organizations

**21**

Division III sports teams & 1 Esports team



The Immaculata University Education Division has graduated:

**65+** Superintendents & Assistant Superintendents

**130+** Principals & Assistant Principals



**98% OF TRADITIONAL STUDENTS** receive some financial aid



**82% RETENTION RATE** from freshman to sophomore



**92 FULL-TIME** faculty



**24% OF DEGREE-SEEKING STUDENTS** are minorities



**97% OF UNDERGRADUATE CLASSES** have fewer than 30 students



**209 PART-TIME** faculty

**\$29.1M**

current value of Immaculata University's endowment, as of 9/30/21

As of December 31, 2021





*Pictured L to R: Circle of Giving Dinner; On the Road in Blue Bell, PA; Circle of Giving Dinner*



## Donor Spotlight ◦ **SUSAN SCHULTZ**

Susan Schultz, whose mother graduated from Immaculata with a degree in family and consumer sciences, established the Florence Krupp Pahides '71 Endowed Scholarship, to honor her mother's love for education. Schultz explained that when she and her brother, Stephen, were young children, their mom went back to school to earn her college degree.

After graduating from high school in 1951, Florence wanted to go to Barry College (now university). However, her parents informed her that if she wanted to earn her undergraduate degree, she would have to pay for it herself. Undaunted, Florence worked multiple jobs to pay her tuition. When she met her future husband, she left Barry to get married and start a family. However, she wanted more and never gave up on her dream of earning a college degree.

Although Florence lived through the cultural shift that defined the 1960s, many of the traditional expectations for women remained. Her husband, who worked full-time and earned his college

degree in the evenings, was raised in a family where the man works, and the wife stays home to raise the children and take care of the house. Florence's parents mirrored those same cultural norms. However, with his deep appreciation for education, Florence's husband was very supportive of her decision to go back to school.

Schultz thinks about how difficult it was for her mom to pursue her college degree.

"She was a full-time mom, and family was number one," Schultz states. "My mom went to class, did what she needed to do to get her homework and exams done, and then went home to fold the wash, iron the sheets and make a roast beef dinner."

Growing up, Schultz points out, "Books were huge. It was a big deal to go to the library," she fondly remembers. Her parents had little money when they got married, but they wanted to expose their children to cultural activities, such as concerts and the theater, which they

had not had an opportunity to explore when they were growing up. Schultz and Stephen were excellent students who were members of the honor society and also participated in choir and various sports.

Schultz is proud of her parents' drive to establish themselves and work their way up the ladder that led to a better life. After earning her bachelor's degree from Immaculata, Florence had a long, fulfilling career as a teacher at Penn Crest/Rose Tree Media School District for 25 years.

Schultz points out that Florence was definitely a mom and homemaker of the 1950s, but with her father's support, she was also college-educated. Because her mom served as a role model to Schultz and her brother—and also to their children—Schultz wanted to establish a scholarship that would honor Florence, who passed away in December 2019.

"I hope the scholarship is a launching pad for students, and I hope it opens up their world...that this scholarship will light a spark that ignites a flame," Schultz said.



*Pictured: Golden Macs Christmas Tea*

# AGENTS OF CHANGE

## CLASS AGENTS

Immaculata University has a strong network of volunteer partners in fundraising, our Class Agents. Along with Class Representatives, Class Agents inspire fellow classmates to support and stay connected with Immaculata.

### *Class Agents Also:*

- > Provide leadership by example through their annual gift or pledge, at any level during fiscal year (July 1–June 30).
- > Work with the Institutional Advancement Office to achieve increased class participation and class dollars through email solicitations to their class.
- > Share in the promotion of the Immaculata Fund on social media, especially during key times such as Charter Day of Giving, and end-of-fiscal year drives.
- > Serve as an ambassador for their class by advising the Alumni Office of any information regarding classmates such as marriages, births, address changes, job promotions, deaths, email addresses, etc.
- > Attend Alumni events on or off campus.
- > Encourage classmates and fellow alumni to maintain lifelong giving back to Immaculata.

### CLASS OF '59

Ruth Ann McCahon Baney '93 M.A.  
Elizabeth Foley Burns  
Eleanor Henry McCurley

### CLASS OF '61

Clarita Rapagnani Landaiche

### CLASS OF '63

Mary Anne Bensinger Gearing

### CLASS OF '68

Sally Tamburello Winterton

### CLASS OF '69

Eva T. Adams  
Peggy Masi McManus

### CLASS OF '70

Mary Louise Cassidy Kramer

### CLASS OF '71

Patricia Crea LaRocco

### CLASS OF '72

Marge Hutchinson McElroy  
Mary Jane Walters Ryan

### CLASS OF '74

Margaret Gill  
Kathleen James

### CLASS OF '76

Kathleen Gallagher Healey

### CLASS OF '83

Julianne Kleponis Yarwood

### CLASS OF '84

Jo Anne McAdams '87 M.A., '96 Ed.D.  
JoAnne McAdams Osborn

### CLASS OF '85

Norma Hall Brown

### CLASS OF '87

Judy Hoffman

### CLASS OF '90

Amy Pontzer Jones

### CLASS OF '91

Kelly Philbin

### CLASS OF '93

Bonita Lea

### CLASS OF '94

Judy Mack Greeley

### CLASS OF '96

Bridget Haines-Frank

### CLASS OF '00

Melissa George

### CLASS OF '04

Elizabeth A. Sillman

### CLASS OF '05

Lori De Rea Kolb '09 M.A.

### CLASS OF '06

Sarah R. Wolfe

### CLASS OF '09

Angelina Sabatini

### CLASS OF '10

Paul McAndrew '15 M.A.

### CLASS OF '11

Elizabeth Strauch

### CLASS OF '12

Justin Cusick  
Jeanne Dagna Ed.D.

### CLASS OF '17

Katelyn Starr

*Cheers and thank you to our wonderful alums who are making an important impact on the future of philanthropy at Immaculata!*





Receiving the Presidential Scholarship was incredibly important for my family. The fact that I was going to be able to go to college with this amazing gift meant that my parents would be able to support my four other siblings as they approached their own college journeys.

The biggest thing I have learned is that I have a passion for student leadership. I think it was always there but the fact that I was able to get to explore it as a student leader here helped me to realize that moving forward I am passionate about doing the same for other people.

Thank you so much to everyone who contributes towards education. It's because of you that we are able to pursue everything we want for our futures. It is because of your support that I am able to pursue something that has been a dream for my entire life, and I am incredibly grateful."

**CLEO HOEY '22**

*Communications and Elementary Education*

**Activities:** Honors Program, Writing Center, Cue & Curtain Theatre, New Student Orientation Co-Chair

SCAN BELOW TO HEAR CLEO'S STORY



**Pictured:** On the Road in Hershey, PA



**BE AN AGENT!** If you are interested in serving Immaculata and your classmates as a Class Agent, please contact:



**Kathy Freney Smith '90**, Assistant Director of Immaculata Fund and Grants  
610-647-4400 x3207 | kfreneysmith@immaculata.edu | immaculata.edu/give



**BOARD OF TRUSTEES**

July 1, 2021–June 30, 2022

- Peggy Behm '81, Chair
- Sister Mary Ellen Tenny, IHM '81, Vice Chair
- Sister Margaret Rose Adams, IHM '04 M.A.
- Sister Elaine de Chantal Brookes, IHM '74
- Norma Hall Brown '85
- Justin Cusick '12
- Sister John Evelyn DiTrollo, IHM '75
- Cindy Mark Egnotovich '79
- Melissa Smola George '00, D.O.
- Ralph J. Hall
- Kathleen James '74
- Patricia Knecht '91, Ph.D.
- Mary Lou Cassidy Kramer '70, Esq.
- Sister Patricia Mengel, IHM '77, '96 M.A.
- Anthony J. Montagnolo
- Kevin Moore '12
- Sister Jeannine Mary Norton, IHM '72
- Theresa Major Payton '89
- Sister Janet Purcell, IHM '72
- Sister Stephen Anne Roderiguez, IHM '92 M.A., Ed.D.
- Sister Mary Smith, IHM '69, '98 M.A.
- Mary Beth McGrath Westmoreland '88
- Judith Witt, Ph.D.

**TRUSTEES EMERITI**

- A.J. Gabriele
- Bernadette Maguire '57
- Mimi Draper Walsh '63

**EXECUTIVE ADMINISTRATION**

As of September 1, 2022

- Barbara A. Lettiere '72, M.A., M.B.A.  
*President*
- Susan W. Arnold  
*Vice President for Institutional Advancement*
- Amy Bosio  
*Vice President for Finance and Administration*
- Patricia Canterino '92, '12 M.A.  
*Vice President for Student Development and Undergraduate Admissions, Dean of Students*
- Steven M. Kendus  
*Vice President for Marketing and Communications*
- Sister Antoine Therese Lawlor, IHM '71  
*Vice President for Mission and Ministry*
- Angela Tekely, Ed.D.  
*Vice President for Academic Affairs & Provost*

## ALUMNI ASSOCIATION BOARD OF GOVERNORS

July 1, 2021–June 30, 2022

### OFFICERS

Eileen Monahan Chopnick '73, M.B.A.  
*President*

Lori De Rea Kolb '05, '09 M.A.  
*President Elect*

Maureen Dupras Curry '88  
*Secretary*

JoAnne McAdams Osborn '84  
*Immediate Past President*

### HONORARY MEMBERS

Barbara A. Lettiere '72, M.A., M.B.A.  
*University President*

Susan W. Arnold  
*Vice President for  
Institutional Advancement*

Karen DeLucia Matweychuk '83  
*Director of Alumni Relations  
and the Immaculata Fund*

Jeanne Bortulin  
*Assistant Director of Alumni Relations*

### ELECTED DELEGATES

Nancy Girvin Burke '68, '00 Ed.D.

Daniel Burns '14

Jeanne Dagna '12 Ed.D.

Margie O'Donnell Donohue '73

Mary Anne Bensinger Gearing '63

Margaret Gill '74

Kara Lutz Haggerty '86, '12 M.A.

Anthonisus "TJ" Jappah '14

Amy Pontzer Jones '90

James Malinowski '09

David Molinaro '17

Thomas Powell '10

Barbara Crea Shannon '70

Maria Cicippio Smeykal '83

Katelyn Starr '17, '21 M.A.

Carolyn Desiderio Thompson '89

Michael Ventola '10

Sarah Wolfe '06, '10 M.A.

# BECOME ENGAGED

## Giving has a much greater impact on Immaculata University than you think!

### WHAT IS ALUMNI PARTICIPATION?

For Class Agents and Institutional Advancement staff members alike, alumni participation is one of those things that is greater than the sum of its parts. On the surface, it's a simple calculation that gives us a number. Dig a little deeper, and it becomes a formula that represents much more than just donating.

Let's start with the methodology. To calculate participation, the numerator is the total number of alumni donors, and the total number of solicitable alumni as our denominator. "Solicitible" means contactable alumni who have not asked to be removed from our mailing or solicitation lists, and for whom Immaculata University has at least one valid form of contact information on file (address, phone, or email). When determining class participation, the same calculation is used, just on a smaller scale: the total number of donors in a class divided by the total number of solicitable alumni in that class.

### Why is it important to increase Alumni Participation?

Now, for the "greater impact" bit: alumni participation is used by U.S. News and World Report as one of seven factors in ranking colleges and universities. The higher our alumni participation rate is, the higher our ranking will be each year. In addition, many granting agencies that fund colleges and universities use alumni participation as a factor when awarding grants.

In short, increasing alumni participation rates at Immaculata University will make us more appealing to prospective students and their families as well as to potential funders and grantors. In fiscal year 2021–2022, 1,317 alumni donors made a gift to Immaculata University, resulting in a 6.43% participation rate. Immaculata University seeks to reach and exceed an alumni participation rate of 6.5% in fiscal year 2022–2023. With 20,471 alumni, we believe this is possible. Working with the Class Agents and the Alumni Board of Governors, we will inspire alumni to demonstrate why we are called the Mighty Macs!

**Pictured L to R:** Education Alumni  
Reception; Golden Macs Christmas Tea





## THERE ARE MANY WAYS YOU CAN GIVE BACK TO IMMACULATA!

### REFER A STUDENT TO IMMACULATA

Family members, neighbors, friends, co-workers—we have much to offer and would love to welcome them to share our story.

### MAKE AN ANNUAL GIFT TO THE IMMACULATA FUND

Currently, participation in annual giving stands at only 6.43%, compared to a national average of 20%. Our goal is to double alumni participation in 2022. Alumni giving impacts many things, from institutional rankings in publications like U.S. News and World Report to the amount of institutional aid we can grant to students to enable them to attend Immaculata. If for no other reason, please consider a gift to pay it forward to a student who has the same dreams as you once did.

### JOIN THE LOYOLA SOCIETY

Can Immaculata students count on your support each year? Show your loyalty to Immaculata by making a gift of *any size* to the University for five or more consecutive years.

### OFFER TO MENTOR A STUDENT OR PROVIDE AN INTERNSHIP

Giving students the opportunity to see how their Immaculata education is translated into a real-life setting is an important opportunity not only for students, but also for future employers.

### ATTEND AN ON THE ROAD EVENT

The Office of Institutional Advancement has many gatherings planned throughout the northeast and mid-Atlantic regions to bring the latest information about Immaculata directly to you! We would love to have you join us and learn more about the great things taking place at Immaculata.

### MAKE A TAX-FREE GIFT WITH AN IRA

Consider using your IRA account to make the most of your charitable giving and receive a tax benefit even if you take the standard deduction. Contact Susan Arnold for details: sarnold@immaculata.edu, or 484-323-3198.

### INCLUDE IMMACULATA IN YOUR ESTATE PLANS

One of the most meaningful ways to help provide for the future of Immaculata is by making a planned gift, a gift whose benefits outlast your years. Making a planned gift can be as simple as making Immaculata a beneficiary of your will or estate, or the beneficiary of a current financial account. We also offer other ways to create a permanent gift to Immaculata that provides the donor or their family with income through a variety of annuity options such as charitable remainder trusts.

### COME BACK TO CAMPUS!

There are many events and happenings on campus throughout the year, including the much-beloved Carol Night, NCAA Division III sports competitions, and performances by the Immaculata Symphony and Cue & Curtain Theatre. If you live close by or happen to be in the area, stop by and see first-hand all that is taking place on our beautiful campus.

## INSTITUTIONAL ADVANCEMENT STAFF

Susan W. Arnold  
Vice President for  
Institutional Advancement  
sarnold@immaculata.edu  
610-647-4400 x3198

Debra Beam '12  
Assistant Director of Special Events  
dbeam@immaculata.edu  
610-647-4400 x3133

Martha Borraccini  
Director of Advancement Services  
mborraccini@immaculata.edu  
610-647-4400 x3681

Jeanne Bortulin  
Assistant Director of Alumni Relations  
jbortulin@immaculata.edu  
610-647-4400 x3135

Elizabeth "Betty" Ginty '01  
Alumni Assistant  
eginty@immaculata.edu  
610-647-4400 x3126

Sister M. Carroll Isselmann, IHM '72, Ed.D.  
Director of Strategic Initiatives  
cisselmann@immaculata.edu  
610-647-4400 x3119

Patricia Lorenzo  
Assistant Director of  
Advancement Services  
plorenzo@immaculata.edu  
610-647-4400 x3134

Karen DeLucia Matweychuk '83  
Director of Alumni Relations  
and the Immaculata Fund  
kmatweychuk@immaculata.edu  
610-647-4400 x3127

Kathy Freney Smith '90  
Assistant Director of  
Immaculata Fund and Grants  
kfreney@immaculata.edu  
610-647-4400 x3207

Jeanne M. Gelbach '66  
Alumni Volunteer, Data Integrity Specialist  
jgelbach@immaculata.edu

Sister Susan Kuk, IHM  
Advancement Assistant  
skuk@immaculata.edu  
610-647-4400 x3446



**Pictured L to R:** The 2021 IU Golf Invitational;  
The IU Centennial Celebration



*Pictured: Circle of Giving Dinner*

# OUR GENEROUS DONORS

## ABOUT OUR GIVING SOCIETIES

Immaculata's giving societies acknowledge our most dedicated donors. They celebrate the collective impact of donors connected to Immaculata through philanthropy and engagement. Society members' contributions provide vital resources for scholarship, academic support, and student programming. The entire Immaculata community is grateful to all of those who impact our students and provide support to the University through their generous participation in these societies. In an effort to honor the intent of your gift, we have chosen a few simple ways to recognize your commitment. Membership in the Maxis and Loyola Societies is sustained by making an annual gift.

## THE MOTHER THERESA MAXIS SOCIETY

Named for the co-founder of the Sisters, Servants of the Immaculate Heart of Mary, Mother Theresa Maxis Duchemin, the Maxis Society has been established to recognize and honor leadership annual giving at Immaculata University. Maxis Society members, the University's most committed annual supporters, are part of a network of alumni, parents, and friends that strongly believe in the mission of Immaculata and support its continued progress and growth.

## MAXIS ASSOCIATES

Designed for graduates from the Classes of 2002–present, and includes gifts to the University for any purpose of up to \$500.

Classes of 2013–Present.....	\$150
Classes of 2008–2012.....	\$250
Classes of 2002–2007.....	\$500

## THE MAXIS SOCIETY

Gifts to the University for any purpose from \$1,000-\$2,499

## MAXIS AMETHYST CIRCLE

Gifts to the University for any purpose between \$2,500-\$4,999

## MAXIS GOLD CIRCLE

Gifts to the University for any purpose between \$5,000-\$9,999

## MAXIS PLATINUM CIRCLE

Gifts to the University for any purpose over \$10,000



*Pictured: On the Road in Hershey, PA*





## DEAR MEMBERS OF THE IMMACULATA UNIVERSITY COMMUNITY,

As you read through the Fiscal Year 2021/2022 Honor Roll of Donors July 1, 2021–June 30, 2022, you will see the names of others, like you, who understand how important Philanthropic support and Engagement is to Immaculata University.

We are most grateful to our 1,317 donors, who in FY 21/22 collectively donated \$944,174 to the Immaculata Fund, we received \$1,798,782 in restricted donations, and raised \$1,297,682 for the Endowment, for total FY 21/22 donations of \$4,040,638. We had four new alumni notify us of a planned Legacy donation, seven donors that established new scholarships last year, and the 83 donors who have already made a difference by supporting our students through a scholarship or endowed fund. Your membership in the Maxis, Loyola, Legacy, Heritage, and 1920 Societies are held in the highest esteem by all at Immaculata University.

I also want to thank all donors for helping Immaculata to reach—and exceed—our goal for the new Parsons Science Pavilion. Our original goal was \$6.5 million, which was surpassed by our actual total of over \$8.1 million. The new science pavilion will not only impact students majoring in the sciences, but all undergraduate students taking core science courses.

Immaculata students know the education they receive at IU is indeed special. Gifts to the Immaculata Fund are directly supporting the very students who (like you) have chosen Immaculata to prepare them to be engaged people in the world. More than 98% of traditional IU students receive some form of financial aid which is essential to helping them pursue their dreams.

On behalf of Immaculata University's students, faculty, and staff, we remain most appreciative to those of you who have loyally supported Immaculata. We hope your support will inspire all alumni to demonstrate through giving why their time at Immaculata was important to their learning and life! Please know that our deepest gratitude is with you now and always!

Gratefully,

**Susan W. Arnold**, Vice President for Institutional Advancement

### THE LOYOLA SOCIETY

The Loyola Society recognizes those who have provided loyal and consistent support to Immaculata University. Donors who have made gifts to the University for any purpose and at any level for a period of five or more consecutive years (based on the University's fiscal year calendar of July 1–June 30) are automatically enrolled in the Loyola Society.

### THE LEGACY SOCIETY

The Immaculata Legacy Society honors alumni, parents and friends who have established endowments, thereby helping to secure the future of the University.

### THE 1920 SOCIETY

The 1920 Society honors alumni, parents and friends who have given cumulative gifts of \$50,000 or more to the University.

### THE HERITAGE SOCIETY

Heritage Society members strengthen Immaculata University's legacy and make a lasting impact on future generations of students through their planned gift to the University. These individuals have the vision to transform students' lives by providing the means to support a vibrant IU learning community via provisions in their estate plans (wills and trusts) and/or beneficiary designations (annuity, IRA, qualified retirement plan, or life insurance).

As a member of the Heritage Society, you will play a vital role—along with its 96 current members—in honoring our historic past while offering an ambitious future for generations of students to come!

#### **Heritage Society members can designate their legacy to:**

- > The Immaculata University Endowment
- > An endowed scholarship
- > General use by the University
- > Designated program support
- > Named endowment for a specific purpose
- > Other donor-selected projects

### PLANNING AHEAD FOR IMPACT

If you have made provisions for Immaculata University in your estate plans or through a deferred gift designation, simply notify us of your gift intentions, so we can warmly welcome you and extend an invitation to our celebratory events. Your willingness to be recognized as a member of The Heritage Society may encourage others to follow your example.

If you are not a member, please consider joining this special group of individuals who care deeply about the University. Bequests of all sizes will impact the University for generations to come! Our team can help you and your advisers structure a gift strategy tailored to your financial and philanthropic goals.

## THE MAXIS SOCIETY

Named for the co-founder of the Sisters, Servants of the Immaculate Heart of Mary, Mother Theresa Maxis Duchemin, the Maxis Society has been established to recognize and honor leadership annual giving of \$1,000 or more at Immaculata University. Maxis Society members, the University's most committed annual supporters, are part of the network of alumni, parents and friends that strongly believe in the mission of Immaculata and support its continued progress and growth.

### PLATINUM CIRCLE, \$10,000 +

Toni Girard Barbour '61  
Christine Parsons Bendinelli  
Patricia A. Bomba '72, M.D.  
Michele Modesto Caldwell '76  
Christine Castiello '67  
Communications Test Design, Inc.  
Kathleen M. Sullivan Cosgrove '60  
and James F. Cosgrove  
Crabtree, Rohrbaugh  
& Associates Architects  
Michele Cairo Daloisio '71  
Alisa Devlin '89, M.D., USAR  
Marie Faccioli Erkes '62  
and Joseph Erkes  
Elizabeth Parsons Forsythe  
Janet Maginn Garrity '78  
Margaret M. Gill '74  
Ralph Hall and Cinda Hall  
Mary Elizabeth Jones '82, Ph.D.  
Frances Gallivan Kilduff '71  
Mary Louise Cassidy Kramer '70, Esq.  
and John M. Kramer, Ph.D.  
Barbara A. Lettiere '72, M.A., M.B.A.  
Laura Nelowet Litka '72  
Bernadette L. Maguire '57  
Mary Patricia Bakey McGowan '75  
Margaret Mary McHugh '89  
and Henry J. McHugh

Office Depot, Inc.  
Donald F. Parsons, Jr., J.D.  
and Ethel B. Parsons  
Gerald J. Parsons and  
Eleanor Parsons  
Jaye L. Gluckler Parsons '64  
Sister Judith Kathryn Parsons, IHM  
'87, Ph.D.  
Leo D. Parsons and  
Maryanne M. Parsons  
Richard M. Parsons and  
Claudia Parsons  
Robert L. Parsons, D.O.  
and Marilyn A. Parsons  
Theresa Major Payton '89  
Brad Petersen  
Virginia Petersen  
Estate of Pamela D. Ransome '75  
Dora Santarelli '83  
Susan Schultz and Peter Schultz  
Carol A. Ellis Tomlinson '68  
Mary Topper '60  
Dora J. Vardaro '58  
Mimi Draper Walsh '63  
and Frank E. Walsh, Jr.  
Dolores E. Wiercinski '85  
Judith V. Witt, Ph.D.

### GOLD CIRCLE, \$5,000-\$9,999

Constance Murray Anders '70  
and Robert N. Anders  
Concord Advisory Group, LTD  
Virginia Lawinski Cunningham '69, Ph.D.  
Rita Hegedus Ferraro '64  
Melissa Smola George '00, D.O.  
Marita Roellig Green '61  
Mary Beth Guyette '79  
Independence Blue Cross  
Janet Ficcadenti Izzo '70  
Kathleen James '74  
Maureen Donohue Johnson '77  
Barbara Deuble Kelly '77, USNR  
Legend Services, Inc.  
Claudette Schilling Leyden '62  
Joseph Lorini  
Louise Anne Cipriani Luongo '70  
Dianne P. Anthony Manges '95  
Helen Deegan Murphy '73, Esq.  
Mary Lou McMenamy Parker '67, Esq.  
Parkhurst Dining  
R.C. Legnini Company, Inc.  
Veronica Gorman Raidy '54  
and John E. Raidy, Sr.  
Theresa Rudnicki-Jones  
Robert J. Saum  
Marianne DiPietro Scales '65  
Susan Cipollini Skahan '81  
and Vincent D. Skahan, Jr.  
James J. Thatcher, Ph.D.  
Susan Jezsik Varlamoff '71  
Wawa, Inc.

### AMETHYST CIRCLE, \$2,500-\$4,999

Ruth Ann McCahon Baney '59, '93 M.A.  
Peggy Ann Behm '81  
Patricia L. Papawick Beronio '57  
and Alfred R. Beronio

Norma C. Hall Brown '85  
C. Caramanico & Sons, Inc.  
Winifred Aicher Carr '68  
Clifton Larson Allen LLP  
Antoinette Stoerlein Delaney '59, Ph.D.  
Duane Morris LLP  
Susan E. Duffy '73  
Cindy Mark Egnotovich '79  
Helen Jeanne Dwyer Festa '69  
Jeanne M. Gelbach '66  
Margaret E. Gillis '68  
Janice M. Murphy Gruber '69  
Anne Marie Leonard Guicheteau '63  
and Eugene H. Guicheteau  
Hanover Supply  
IPS Resource Group LLC  
Janet Fenton Kane, Ed.D.  
Christine Visceglia Kanter '69  
Anne E. Cavanaugh Kearn '57  
and Robert A. Kearn, Sr.  
Madeleine Long, M.D.  
Earlin Lutz, Ph.D. and Marilyn Lutz  
Kathryn Speaker MacNett '70, Esq.  
Cecelia Maher '74  
Joyce A. McCaffrey '66, M.D.  
Mary Louise Hanlon McLaughlin '57  
The MCS Group, Inc.  
PNC Bank N.A.  
Ruth L. Rizzo '73, M.D.  
Maryann E. Hammeke Romeo '67  
and Robert W. Romeo  
Edgar C. Worley, Jr.  
Worley's Home Services LLC  
Joan Archangelo Yue '68, J.D.

### CENTENNIAL CIRCLE, \$1,500-\$2,499

Barry Isett and Associates  
Maureen Callaghan Bigham '63  
Robert H. and Ruth Guerin Bowman '45  
Charitable Foundation



*Immaculata has helped form me, has opened my perspective of the world around me. It's been really eye opening to come here and experience the different things Immaculata has to offer. I experienced a hardship in my first year, with my mother passing away, and Immaculata was definitely there for me, and gave me the chance to continue on with the pursuit of my degree.*

*I am most grateful for receiving the financial aid and scholarships bestowed upon me because without it, I would not be here. It has enabled me to continue my education and pursue a degree that I am extremely passionate about. There are no words that can properly express the meaning and sense of thankfulness that I have for all the support I have received from Immaculata University."*

### SHANE WARNER '24

*Allied Health (Medical Laboratory Science concentration)*

**Activities:** Chemistry Department Work Study, Environmental Science Club, Macs Respect Life Club, Political Science Club

SCAN BELOW TO HEAR SHANE'S STORY





Pictured: The IU Centennial Celebration



Gregory J. Brackin  
 Nancy Girvin Burke '68, '00 Ed.D.  
 Kpehe Carter '16  
 Barbara VanHorn Colsey '56 †  
 Maryanne E. Hartman Cunningham  
 '88 M.A., '90 M.A.  
 Justin M. Cusick '12  
 Claire T. Daniels '94  
 Ellucian Company LP  
 Eleanor A. Fogarty '91  
 Nicole Marie Lacoste Folks '91  
 Isabelle Visceglia Gapstur '68  
 Francis J. Gardner  
 Mary Anne Bensinger Gearing '63  
 Herman Goldner Company, Inc.  
 Doreen M. Heath  
 Judith A. Hoffman '87  
 Hospital Central Services, Inc.  
 Jean L. deVecchis Johnson '56  
 Lucile C. Kramer '65  
 Kathleen Cooper Kulesza '67  
 Margaret Lacey, Ph.D.  
 Patricia Crea LaRocco '71, M.D.  
 Jo Anne Marrone '64  
 Mary I. McDonald '87  
 Nina M. Mulrooney '76  
 Patricia Panichelli Papiez '70  
 Catherine M. Pipan '87, M.D.  
 Paula Weidel Refi '67  
 Anne Regina '76  
 Carl C. Riley  
 Lisa Jones Rinker '91  
 Robindale Consulting LLC  
 Paula Mroz Scarfo '82  
 Anita Williamson Siegenthaler '60  
 Margaret Anne Stein '68  
 Marcel Tabone '06 Psy.D.  
 Theresa M. Weidenbaugh '06 Ed.D.  
 Julianne Kleponis Yarwood '83

Jean Roney Yoder '60  
 Amy L. Zimmerman '95

#### THE MAXIS SOCIETY, \$1,000-\$1,499

Anonymous (1)  
 Doreen Beaudreau  
 Patricia Belmont  
 Rosemarie Citeroni Bickler '69  
 Mary Beth Czaus Bimmerle '86  
 Geraldine M. Boyle-Kramer '71  
 Dana McBride Breslin, Esq. '72  
 Helen Walsh Callaghan '62  
 Andrew J. Carter  
 Stephen P. Carter and  
 Patricia A. Carter  
 Elizabeth Cass-Schmidt '74  
 Margaret Anne Collins '65  
 Carol Peterman Cox '67  
 Robert J. Czukoski  
 Mary Jo Delaney '73  
 Anne McDonald DePrince '67  
 Carolyn Johnson DiFilippo '86  
 Ann Marie McErlain DiMarco '75  
 Julann Oppasser Donnelly  
 Kathleen H. Van Wattering Donnelly '60  
 Margaret M. O'Donnell Donohue '73  
 Jean Doris '53  
 John E. Dowling '05 M.A., '20 Ed.D.  
 and Jill A. Oppasser  
 Mary Anne Burns Duffy '67  
 Ruth Duffy-Krywicky '77, Ph.D.  
 Stephen Erdman  
 Karen Magda Fein '74  
 and Kenneth W. Fein  
 Jane A. Flynn '69  
 Anne M. Gellrich '83  
 Janice Bowers Gess '67  
 Edmund O. Goll and Louise Goll  
 Gerard A. Goulet

Sara D. Harris '87  
 Rita Bensinger Hartleroad '67  
 Kathleen Gallagher Healey '76  
 and Joseph Healey  
 Elsie Blum Heaney '59, '91 M.A.  
 Carol A. Fowler Heineman '60  
 Rev. Gregory J. Hickey  
 Mary Elizabeth Hoffman '95  
 Margaret Monahan Hogan '63, Ph.D.  
 Kathleen Hughes '73  
 Anne Marie Kelly  
 Patricia Ann Knecht '91, Ph.D.  
 Frances Wisniewski Kormes '65  
 Susan Sackett Kratzinger '68  
 Yvonne M. Falcon Kuemmerle '63  
 Eleanor Gualtiere Lashley '65  
 Izanne Leonard-Haak '70  
 Anna Pullan Levine '61  
 Ruth Mark Lew '52  
 Regina Curry Lindsay '59  
 Bernadette S. McLaughlin Loudon '79  
 Nancy James Mastrian '59  
 Carol McCadden Mayer '79  
 Jo Anne McAdams '84, '87 M.A.,  
 '96 Ed.D. and Frank McAdams  
 Brett McAllister  
 Maureen H. McCullough '75, J.D.  
 Margaret E. Thomas McDermott '69  
 Marliiss McGuinness  
 Suzanne Trotter McKeever '03 M.A.  
 Mary Jane Almond McKenna '57  
 Elizabeth Burnes McKinney '44  
 Margaret Masi McManus '69  
 Anne Meister '70  
 Gary Michelson  
 Theresa Tyus Mitchell '21  
 Joan Gagliardi Monahan '63  
 Barbara Anne O'Connor Mooney '64  
 Susan Antonelli Morris '79, Esq.

Margaret M. Murphy '82  
 and George W. Murphy  
 Margaret M. Murtha '22  
 Michael Murtha and Patricia Murtha  
 Suzanne Yohey Naughton '64  
 Helen O'Connell O'Grady '63  
 Margot Ann O'Neill '74  
 Craig Petersen  
 Kelly Ann Philbin '91, '07 M.A.  
 Barbara A. Piatka '62, Ph.D.  
 M. Sidney Pinnie '02 M.A.  
 Eileen R. Raffaele  
 Vreni Ranjo  
 Roberta Regetta '81  
 Martin Riehl  
 Melanie Donnan Rittenhouse '67  
 Gloria Martino Satriale '82, J.D.  
 Jean Wagoner Shingle '90, Ph.D.  
 Lisa Ann Stephenson Skinner '85  
 Maryanne Smart '04 M.A.  
 Francine Freimann Snyder '67  
 Joanne Korpanty Solecki '80  
 Linda Bertotti Southerling '67  
 Don Tenerowicz  
 Michael Tiagwad  
 Margaret Ann Ulrich '70  
 Karha Us '75  
 Mary E. Agnew Vernick '66  
 Carolyn Lenz Warner '62  
 Elizabeth Ann Weber '12 Ed.D.  
 Mary Carol Landis Wescott '72  
 Mary Ann Smith West '68  
 Sally A. Tamburello Winterton '68,  
 Ed.D.  
 Kathleen Killion Wojcik '75

Report includes gifts from 7/1/21 to 6/30/22. Every effort has been made to ensure accuracy. We apologize for any errors or omissions made in donor listings. † Indicates deceased

## MAXIS ASSOCIATES

For younger alumni and more recent graduates, who have supported Immaculata at leadership levels as defined according to their class year.

### CLASSES 2011-PRESENT, \$150+

Rev. Kyle M. Adamczyk '12  
Nancy B. Barker '16 Ed.D.  
Leslie A. Bokoski '12  
Clinton James Bradley '20  
Kpehe Carter '16  
Justin M. Cusick '12  
Jeanne M. Dagna '12 Ed.D.  
Daniel R. Klodarska '13  
Lynda Michaels '18 Ed.D.  
Theresa Tyus Mitchell '21  
Kevin W. Moore '12  
Katelyn Grace Starr '17, '21 M.A.  
Cristina M. Tansey '11 M.S.N., '21 Ed.D.  
Elizabeth Ann Weber '12 Ed.D.

### CLASSES 2006-2010, \$250+

Sara M. Pletcher Bluhm '08  
Gwen Menton Cantarera '07  
Stephen D. Deihl '06  
Ronald B. Jones '09  
Mary Frances Keating '10, '20 M.S.N.  
Alice Marie Quirk '09  
Angelina Sabatini '09  
Marcel Tabone '06 Psy.D.  
Theresa M. Weidenbaugh '06 Ed.D.

### CLASSES 2000-2005, \$500+

Anonymous (1)  
Cynthia Calla Christenson '03 Psy.D.  
Lisa A. Dougherty '02, Esq.  
John E. Dowling '05 M.A., '20 Ed.D.  
and Jill A. Oppasser  
Melissa Smola George '00, D.O.  
Suzanne Trotter McKeever '03 M.A.  
M. Sidney Pinnie '02 M.A.  
Claire Coleman Sheridan '05, Ph.D.  
Laura Madle Singh '02, '04 M.A.  
Maryanne Smart '04 M.A.  
Lisa Witulski '03

## PARSONS SCIENCE PAVILION CAMPAIGN

Immaculata University extends sincere appreciation to the following individuals, corporations, and foundations for their investment in the Parsons Science Pavilion Campaign at the levels listed below. They will be listed on the special recognition plaque in the Parsons Science Pavilion.

### LEADERS, \$100,000+

George I. Alden Trust  
Christine Parsons Bendinelli

Patricia A. Bomba '72, M.D.  
Cindy Mark Egnovich '79  
Elizabeth Parsons Forsythe  
Janet Maginn Garrity '78  
Barbara Lettiere '72  
Bernadette L. Maguire '57  
Donald F. Parsons, Jr., J.D.  
and Ethel B. Parsons  
Gerald J. Parsons and  
Eleanor Parsons  
Sister Judith Kathryn Parsons, IHM '87, Ph.D.  
Leo D. Parsons and  
Maryanne M. Parsons  
Richard M. Parsons and  
Claudia H. Parsons  
Robert L. Parsons, D.O.  
and Marilyn A. Parsons  
Henry A. Quinn Charitable Foundation  
Roberta Regetta '81  
Maryann E. Hammeke Romeo '67  
and Robert W. Romeo  
Sisters, Servants of the  
Immaculate Heart of Mary  
Dora J. Vardaro '58  
Mimi Draper Walsh '63  
and Frank E. Walsh, Jr.

### BENEFACTORS, \$25,000-\$99,999

Elizabeth A. Bricker '60 †  
Gunard Berry Carlson  
Memorial Foundation, Inc./  
Frederick Travaglini, Jr.  
Christine Castiello '67  
Jeanne A. di Toro '47

Stella M. di Toro '39 †  
Kathryn Donnelly '90  
Margaret M. Gill '74  
Pamela Tart Goergen '63  
Mary Elizabeth Jones '82, Ph.D.  
Frances Gallivan Kilduff '71  
Mary Patricia Bakey McGowan '75  
The McLean Contributionship  
Dianne Majer Mundy '64  
Jaye Gluckler Parsons '64  
Theresa Major Payton '89  
and Christopher Payton  
Susan Jezsik Varlamoff '71  
Judith V. Witt, Ph.D.

### PARTNERS, \$15,000-\$24,999

Constance Murray Anders '70  
and Robert N. Anders  
Toni Girard Barbour '61  
Sara S. Gilson Brennen '44 †  
Carol Peterman Cox '67  
Communications Test Design, Inc.  
Crabtree, Rohrbaugh  
& Associates Architects  
Michele Cairo Daloisio '71  
Melissa Smola George '00, D.O.  
Margaret E. Gillis '68  
Ralph Hall and Cinda Hall  
Doreen M. Heath  
Mary Louise Cassidy Kramer '70, Esq.  
and John M. Kramer, Ph.D.  
Cecelia Maher '74  
Mary Lou McMenamy Parker '67, Esq.  
John Daniel Reiley †  
Ruth L. Rizzo '73, M.D.



**Pictured L to R:** On the Road in Bethlehem, PA; On the Road in McLean, VA

Report includes gifts from 7/1/21 to 6/30/22. Every effort has been made to ensure accuracy. We apologize for any errors or omissions made in donor listings. † Indicates deceased



Mary Topper '60  
Mary Beth McGrath Westmoreland '88

## THE 100th ANNIVERSARY SOCIETY

During the celebratory period of the Centennial (January 1, 2019–October 15, 2021), those with gifts and pledges of \$10,000 or more became members of the 100th Anniversary Society and will be listed on a special recognition plaque in the Parsons Science Pavilion.

### ANNIVERSARY SOCIETY, \$10,000

Constance Murray Anders '70  
and Robert N. Anders  
Ruth Ann McCahon Baney '59, '93 M.A.  
Toni Girard Barbour '61  
Christine Parsons Bendinelli  
Rosemarie Citeroni Bicksler '69  
Patricia A. Bomba '72, M.D.  
Ann Burgmeyer '68  
Michele Modesto Caldwell '76  
Winifred Aicher Carr '68  
and William H. Carr  
Andrew J. Carter  
Christine Castiello '67  
Communications Test Design, Inc.  
Crabtree Rohrbaugh  
& Associates Architects  
Carol Peterman Cox '67  
Virginia Lawinski Cunningham '69, Ph.D.  
Michele Cairo Daloisio '71  
Claire T. Daniels '94  
Alisa A. Devlin '89, M.D., USAR  
Kathleen H. Van Wattering Donnelly '60  
Marie Faccioli Erkes '62  
and Joseph Erkes  
Salvatore Faia and Margaret Faia  
Rita Hegedus Ferraro '64  
Helen Jeanne Dwyer Festa '69  
Lorraine Gable Finelli '78, D.O. †  
Elizabeth Parsons Forsythe  
Janet Maginn Garrity '78  
Melissa Smola George '00, D.O.  
Margaret M. Gill '74  
Margaret E. Gillis '68  
Pamela Tart Goergen '63  
Marita Roellig Green '61  
Anne Marie Leonard Guicheteau '63  
Mary Beth Guyette '79  
Ralph Hall and Cinda Hall



*Pictured: On the Road in Paramus, NJ*

Elsie Blum Heaney '59, '91 M.A.  
Doreen M. Heath  
Janet Ficcadenti Izzo '70  
IHM Alumnae  
Kathleen James '74  
Maureen Donohue Johnson '77  
Rosemarie Marcaccio Joseph '73  
and John M. Joseph, Ph.D.  
Janet Fenton Kane, Ed.D.  
Christine Visceglia Kanter '69  
Anne E. Cavanaugh Kearn '57  
and Robert A. Kearn, Sr.  
Kathleen Gildea Kelley '41 †  
Barbara Deuble Kelly '77, USNR  
Frances Gallivan Kilduff '71  
Patricia Ann Knecht '91, Ph.D.  
Mary Louise Cassidy Kramer '70, Esq.  
and John M. Kramer, Ph.D.  
Ruth Duffy Krywicki '77, Ph.D.  
Claudette Schilling Leyden '62  
LifeLong Learning Institute  
Laura Nelowet Litka '72  
Louise Anne Cipriani Luongo '70  
Bernadette L. Maguire '57  
Cecelia Maher '74  
Ann Sunday Mastrangelo '62  
Jo Anne McAdams '84, '87 M.A.,  
'96 Ed.D. and Frank McAdams  
Mary Patricia Bakey McGowan '75  
Dianne Majer Mundy '64  
Helen Deegan Murphy '73, Esq.  
Mary Lou McMenamy Parker '67, Esq.  
Joseph L. Parrillo  
Donald F. Parsons, Jr., J.D.  
and Ethel B. Parsons

Gerald J. Parsons and  
Eleanor Parsons  
Jaye L. Gluckler Parsons '64  
Sister Judith Kathryn Parsons, IHM  
'87, Ph.D.  
Leo D. Parsons and  
Maryanne M. Parsons  
Richard M. Parsons and  
Claudia H. Parsons  
Robert L. Parsons, D.O.  
and Marilyn A. Parsons  
Theresa Major Payton '89  
and Christopher Payton  
Agatha Sienicki Pope '67  
Pamela D. Ransome '75  
Roberta Regetta '81  
Ruth L. Rizzo '73, M.D.  
Maryann E. Hammeke Romeo '67  
and Robert W. Romeo  
Theresa Rudnicki-Jones  
Dora Santarelli '83  
Robert J. Saum  
Susan Cipollini Skahan '81  
and Vincent D. Skahan, Jr.  
Eileen Heck McDevitt Slawek '52  
Carol A. Ellis Tomlinson '68  
and Charles W. Tomlinson, Jr.  
Mary Topper '60  
Susan Jezsik Varlamoff '71  
WSFS Community Foundation  
Jennifer A. Yorke '89  
Joan Archangelo Yue '68, J.D.  
Class of 1952  
Class of 1957  
Class of 1959

Class of 1960  
Class of 1961  
Class of 1962  
Class of 1963  
Class of 1964  
Class of 1965  
Class of 1966  
Class of 1967  
Class of 1968  
Class of 1969  
Class of 1970  
Class of 1971  
Class of 1972  
Class of 1973  
Class of 1974  
Class of 1976  
Class of 1977  
Class of 1978  
Class of 1979  
Class of 1981  
Class of 1982  
Class of 1983  
Class of 1984  
Class of 1985  
Class of 1987  
Class of 1988  
Class of 1989  
Class of 1990  
Class of 1991  
Class of 2000  
Class of 2002  
Class of 2016

*Report includes gifts from 7/1/21 to 6/30/22. Every effort has been made to ensure accuracy. We apologize for any errors or omissions made in donor listings. † Indicates deceased*

**Pictured L to R:** On the Road in Bethlehem, PA; On the Road in Cherry Hill, NJ



## THE HERITAGE SOCIETY

The Immaculata Heritage Society honors alumni, parents and friends who have included Immaculata in their estate plans, thereby helping to strengthen and preserve the University.

Pamela Presley Abraham, Psy.D.  
 Joan Trybala Batory '66  
 Phyllis Bellopede '82  
 Rosemarie Citeroni Bicksler '69  
 Sara M. Pletcher Bluhm '08  
 Carol Vasko Bonnet '75  
 Maria Butte '86  
 Rose Marie Santucci Chastanet '65  
 Robin Evasew Mottinger Cini '79  
 Margaret Anne Collins '65  
 Carol Peterman Cox '67  
 Maria Cuddy-Casey, Ph.D.  
 Leslie Ann Culp '82  
 Virginia Lawinski Cunningham '69, Ph.D.  
 Marilyn D'Andrea-Spica '82, M.D.  
 Jeanne A. di Toro '47  
 Maria A. DiBenedetto '75  
 Moya Kaporch Dittmeier '81, Ed.D.  
 Jean Doris '53  
 Judith Graham Jester Durante '87  
 Miles Edwards, Ed.D. '04  
 Theresa A. Eller '06, M.A. '09  
 Helen Jeanne Dwyer Festa '69  
 Charlene Y. Fitzwater, Ph.D.

Gordon Keith Funk '81  
 Alfonse J. Gabriele  
 Jeanne M. Gelbach '66  
 Adele Williams Gerngross '78, J.D.  
 Patricia Thompson Gillen '65  
 Margaret Mansberg Girten '85  
 Barbara E. Goodwin '68  
 Susan Moeller Gross '68  
 Mary A. Haas '98  
 George L. Head  
 Elsie Blum Heaney '59, '91 M.A.  
 Reverend Gregory J. Hickey  
 Kevin Holleran, Esq.  
 Mariellen Hoyt  
 Kathleen Hirsch Hull '69  
 Kathleen James '74  
 Clare Jameson '80  
 Mary Elizabeth Jones '82, Ph.D.  
 Christine Visceglia Kanter '69  
 Barbara Deuble Kelly '77, USNR  
 Lucile C. Kramer '65  
 Clarita Rapagnani Landaiche '61  
 Susan Lesh '82  
 Barbara A. Lettiere '72, M.A., M.B.A.  
 Madeleine Long, M.D.  
 Jacqueline Dunleavy Longo '90  
 Marijo Lucas, Ph.D.  
 Bernadette L. Maguire '57  
 Janice I. Mahan  
 Antoinette Iaquinto Makowski '60  
 Mary Ann Perlouise Manlio '59  
 Wilma Hsiang Mao '56  
 Jo Anne Marrone '64  
 Joyce A. McCaffrey '66, M.D.  
 Jane Ann McLaughlin '54, Ed.D.

Melanie A. Macko Miles '69  
 Joan Gagliardi Monahan '63  
 Joan Thomas Morrow '61  
 Phyllis Eyth O'Brien '64  
 Jean M. O'Donnell '46  
 Lynn Hubbard Ouellette '66  
 Mary Lou McMenamy Parker '67, Esq.  
 JoAnn M. Paslawsky '73  
 Loreta C. Chirico Perthes '70  
 Andree Lennon Pride '81  
 Vreni Ranjo  
 Denise Charette Rentschler '84  
 Ruth L. Rizzo '73, M.D.  
 Felicia Rocchi '79  
 Maryann E. Hammeke Romeo '67  
 Catherine Raso Scensny '58  
 Anita Williamson Siegenthaler '60  
 Grace Kelley Skrzypczak '62  
 Patricia Pidgeon Smith '61  
 Mary Simon Staub '64  
 Terry A. Terzuolo '71  
 James J. Thatcher, Ph.D.  
 Joseph Tumolo  
 Marie McFarland Vincent '57  
 Carolyn Lenz Warner '62  
 Patricia C. Washburn '91 M.A.  
 Mary Newell Welch '61  
 Doris L. Werner '63  
 Sally A. Tamburello Winterton '68 Ed.D.  
 Judith V. Witt, Ph.D.  
 Kathleen York Witten '86  
 Julianne Kleponis Yarwood '83  
 Amy L. Zimmerman '95  
 Sharon Reed Zogby '70

## ESTATE GIFTS AND BEQUESTS RECEIVED DURING FISCAL YEAR 2021-2022:

Estate of Andrew J. Brunner  
 Estate of Gertrude Michel Forte '58, Ph.D.  
 Estate of Mary E. Jacqueline '76, M.D.  
 Estate of Kathleen Gildea Kelley '41  
 Estate of Kathleen M. Kelly '65  
 Estate of Beatrice Braun Lock '59  
 J. Robert O'Donnell Trust  
 Estate of Jennie Palumbo  
 Estate of Pamela D. Ransome '75  
 Estate of Elinor Schoppet '60, Ph.D.  
 Estate of Sandra E. Slater '93  
 Estate of Dorothy G. Wolper '50

## THE LEGACY SOCIETY

The Immaculata Legacy Society honors alumni, parents and friends who have established endowments or annuities held by a third party, thereby generously providing a secure stream of income for scholarships and programs for the University in perpetuity.

Brian Apgar  
 Margaret M. Beauchesne  
 Nicholas F. Borrelli, Ph.D.  
 Dolores M. D'Alessandro Bozzelli '52 †  
 and Andrew Bozzelli †

Report includes gifts from 7/1/21 to 6/30/22. Every effort has been made to ensure accuracy. We apologize for any errors or omissions made in donor listings. † Indicates deceased



Francis A. Breen, Jr., M.D.†  
 John D. Burke †  
 Thomas F. Burke, Ph.D.  
 Kathleen M. Sullivan Cosgrove '60  
 Cecilia M. DeLuca †  
 Sharon Denny '65, M.D.  
 Jeanne A. di Toro '47  
 Stella M. di Toro '39 †  
 Sister Kathleen C. Doult, IHM, D.M.A.  
 Suzanne C. Earley '42 †  
 Joan Bell Edmonds '52 †  
 and Patrick G. Edmonds  
 Gertrude Virginia Falini-Nunan '50 †  
 Nicole Marie Lacoste Folks '91  
 Barbara Miriam Fossett  
 Karen Gallagher  
 Margaret Vassalotti Gottlieb '46, M.D.†  
 Kathleen V. Greatrex '80, M.D.  
 Carl Guarino, J.D.  
 Jane Feely Guzikowski '50  
 William Healey and Mary Healey †  
 Mary Louise Cassidy Kramer '70, Esq.  
 and John M. Kramer, Ph.D.  
 Beverly Hill Lomax '60  
 Madeleine Long, M.D.  
 Marijo New Lucas, Ph.D.  
 Bernadette L. Maguire '57  
 Margaret M. McHugh '89  
 and Henry J. McHugh  
 John McLaughlin †  
 Gary Michelson  
 Melanie A. Macko Miles '69  
 Steady Moono '02 Ed.D.  
 Brad Petersen  
 Virginia Petersen  
 Richard J. Pinola

Cheryl Dever Rapp '85 and Kevin Rapp  
 Robert J. Ricciardi and Nancy Ricciardi  
 Joanne Salop  
 Robert J. Saum  
 William S. Saum  
 Peter Schultz and Susan P. Schultz  
 The Society of the Friendly  
 Sons of Saint Patrick for  
 the Relief of Emigrants  
 James J. Thatcher, Ph.D.  
 Barbara C. Travaglini '91 †  
 and A. Frederick Travaglini †  
 Mary Ann Valyo '85  
 Don L. Verdiani  
 Vincent L. Verdiani †  
 Mimi Draper Walsh '63  
 and Frank E. Walsh, Jr.  
 Mary M. Wehrmann  
 Denise Aquilante Weidman '97  
 Dolores Wiercinski '85  
 Judith V. Witt, Ph.D.

## THE 1920 SOCIETY

The 1920 Society honors alumni, parents and friends who have given cumulative gifts throughout their lifetime of \$50,000 or more to Immaculata University.

### VISIONARIES, \$1 MILLION+

Kathryn Tucker Alexander '31 †  
 The Connelly Foundation

# CONGRATULATIONS

and our thanks to the donors who won special recognition during our March 16, 2022 Mighty Mac Madness Day of Giving Challenges:

## ASSIST CHALLENGE

*The class that raises the most.*

**The Class of 1974** raised \$13,250.

## BUCKET BRIGADE CHALLENGE

*The decade that raises the most.*

**The 1970's** raised \$21,975.



**Pictured:** IU nursing students in the Simulation Lab



OUR GENEROUS DONORS

Alfonse Gabriele and  
Barbara Gabriele  
Barbara A. Lettiere '72, M.A., M.B.A.  
Bernadette L. Maguire '57  
The Sandy Hill Foundation  
Sisters, Servants of the  
Immaculate Heart of Mary  
Dora J. Vardaro '58  
W. W. Smith Charitable Trust  
Mimi Draper Walsh '63  
and Frank E. Walsh, Jr.

**BENEFACTORS, \$500,000-\$999,999**

Marjorie Gildea Alford '38 †  
Joan Bell Edmonds '52 †  
and Patrick G. Edmonds  
Theresa K. Fagan '39 †  
Janet Maginn Garrity '78  
The Maguire Foundation  
Virginia M. McNabb †  
The Pew Charitable Trusts  
Barbara Carlson Travaglini '91 †

**PARTNERS, \$100,000-\$499,999**

The Ametek Foundation, Inc.  
The Annenberg Foundation  
Aramark Higher Education Group  
The Arcadia Foundation  
Barnes & Noble College  
Booksellers, Inc.  
The Elsie E. and  
Joseph W. Beck Foundation  
Phyllis Bellopede '82  
and Robert Bellopede  
Christine Parsons Bendinelli  
Sister Regina Francis Bigley '38 †

Elizabeth Walsh Bole '50 †  
Patricia A. Bomba '72, M.D.  
Marie G. Bossert †  
Dolores D'Alessandro Bozzelli '52 †  
and Andrew Bozzelli †  
John D. Burke † and Paula S. Burke †  
Sister Mary Consuela Callaghan, IHM †  
Richard A. Campion  
Alice McCrystal Carney '48 †  
Winston J. Churchill, Jr.  
Kathleen Sullivan Cosgrove '60 and  
James Cosgrove  
Virginia Lawinski Cunningham '69, Ph.D.  
Cecilia M. DeLuca †  
Jeanne A. di Toro '47  
Stella M. di Toro '39 †  
Cindy Mark Egnotovitch '79  
Gertrude V. Falini-Nunan '50 †  
William S. Fishman †  
Elizabeth Parsons Forsythe  
The George I. Alden Trust  
Margaret M. Gill '74  
Pamela Tart Goergen '63  
Margaret Vassalotti Gottlieb '46, M.D. †  
Janice Murphy Gruber '69  
and Bernard Gruber †  
Carl Guarino, J.D.  
The Gunard Berry Carlson  
Memorial Foundation, Inc.  
Jane Feely Guzikowski '50  
William J. Healy and Mary Healy †  
Doreen M. Heath  
Mary Elizabeth Jones '82, Ph.D.  
Christine Visceglia Kanter '69  
Mary Louise Cassidy Kramer '70, Esq.  
and John M. Kramer, Ph.D.

The Kresge Foundation  
The Christian R. and  
Mary F. Lindback Foundation  
Bernadette Herbst Loeb '59, M.D. †  
Joan Hefton Lynn '49 †  
Jane M. MacDermott †  
Marianna Marchese '41 †  
Mary Catherine McCall '40 †  
Margaret Mary McHugh '89  
and Henry J. McHugh  
Eileen McKelvey '29 †  
Margaret McKelvey '28 †  
Gary Michelson  
Rosa DeFrancesco Minsker '43 †  
Thomas W. Morelli † and Edna Morelli  
Helen Nickels †  
Agnes Boyle O'Donnell '48 †  
and J. Robert O'Donnell †  
Office Depot, Inc.  
Mary Lou McMenamy Parker '67, Esq.  
Donald F. Parsons, Jr., J.D.  
and Ethel F. Parsons  
Gerald J. Parsons and Eleanor Parsons  
Jaye Gluckler Parsons '64  
Sister Judith Kathryn Parsons, IHM  
'87, Ph.D.  
Leo D. Parsons and  
Maryanne M. Parsons  
Richard M. Parsons and Claudia Parsons  
Robert L. Parsons, D.O.  
and Marilyn A. Parsons  
Theresa Major Payton '89  
and Christopher Payton  
PNC Financial Services Group  
Henry A. Quinn Charitable Foundation  
Catharine A. Raferty '30 †

Veronica Gorman Raidy '54  
Pamela D. Ransome '75  
Trieste Musa Rao '37 †  
Roberta Regetta '81  
Edward J. Roach †  
Maryann E. Hammeke Romeo '67  
and Robert W. Romeo  
Eileen Heck McDevitt Slawek '52  
Anne Springer '39 †  
Grace Burns Vincent '31 †  
The Frank Visceglia Foundation  
Judy V. Witt, Ph.D.  
Sister Marie de Brebeuf Zvigaitis, IHM '38 †  
Stanley and Apolonia Zvigaitis  
Family Memorial

**ASSOCIATES, \$50,000-\$99,999**

Mary Carroll Abell †  
Ruth Ann McCahan Baney '59,  
'93 M.A.  
Ruth McDonald Booth '30 †  
Ruth Guerin Bowman '45 †  
The Michael A. Bruder Foundation  
Stephen P. Carter and  
Patricia A. Carter  
Rita E. Collins '63  
CoreStates Bank  
Cue and Curtain Players  
Sharon Denny '65, M.D.  
Kathleen Van Wettering Donnelly '60  
Kathryn A. Donnelly '90  
Jean Doris '53  
Sister Kathleen C. Doust, IHM, D.M.A.  
Edward K. Driebe †  
Susan E. Duffy '73  
Suzanne C. Earley '42 †



**Pictured L to R:** The IU Centennial Celebration; IU student volunteer service project; Senior nursing students poster presentation

Report includes gifts from 7/1/21 to 6/30/22. Every effort has been made to ensure accuracy. We apologize for any errors or omissions made in donor listings. † Indicates deceased



**Pictured:** The 2021 IU Golf Invitational

The Charles Edison Fund  
 Thomas J. Ford, Ed.D. and  
 Maureen Ford  
 James P. Gallagher, Sr., Ph.D.  
 Margaret E. Gillis '68  
 William J. Good †  
 Kathleen V. Greatrex '80, M.D.  
 Marita Roellig Green '61  
 Ralph Hall and Cinda Hall  
 Mary Ellen Jacqueline '76, M.D. †  
 Helen S. Kane †  
 The T. James Kavanagh  
 Foundation, Inc.  
 Frances Gallivan Kilduff '71  
 Florann Strohleim Knecht '49 †  
 Patricia O'Neill Kraus '62  
 John D. Lane † and Rachel Lane †  
 Madeleine Long, M.D.  
 Louise Anne Cipriani Luongo '70  
 Cecelia Maher '74  
 Eileen Guinee Marshall '39 †  
 Joseph A. Matjesic † and  
 Patricia M. Matjesic  
 Jo Anne McAdams '84, '87 M.A.,  
 '96 Ed.D. and Frank McAdams  
 Mary Patricia Bakey McGowan '75  
 John McLaughlin †  
 The McLean Contributionship  
 Eleanor Wandlass Miller '34 †  
 Marie Louise Mullen '45 †  
 Nina M. Mulrooney '76  
 Margaret M. Murphy '82  
 and George W. Murphy  
 Bernadette Brett O'Boyle '40 †  
 Donald F. Parsons † and  
 Elizabeth Parsons †

PECO, An Exelon Company  
 Richard J. Pinola  
 The Presser Foundation  
 Gino Primus  
 Ruth L. Rizzo '73, M.D.  
 Grace Kelley Skrzypczak '62  
 Grace Small '45 †  
 Francine Freimann Snyder '67  
 Mary Simon Staub '64  
 The Teagle Foundation  
 James J. Thatcher, Ph.D.  
 Widener Memorial Foundation  
 in Aid of Handicapped Children

## THE LOYOLA SOCIETY

The Loyola Society recognizes those alumni, parents and friends who have provided loyal and consistent financial support to Immaculata University. The following donors have made gifts, of any size and for any purpose, for the past five or more consecutive years.

Eva T. Adams '69  
 Justine Hawthorn Adams '47  
 Joann Guicheteau Alba '72  
 Jo Anne DiLauro Alexander '61  
 Constance Murray Anders '70  
 Crelia Anoaia '77  
 Margaret M. Hoepp Apice '73

Patricia Simpson Arata '74  
 Susan W. Arnold  
 Marlene M. Lambiase Auxer '64  
 Suzanne Babyar-Rothbart '76, Ph.D.  
 Frances Short Bailey '60  
 Ruth Ann McCahon Baney '59, '93 M.A.  
 Toni Girard Barbour '61  
 Jeannette L. Barr '07  
 Michael P. Barrett and  
 Carlyn V. Barrett  
 Laverne Gavron Bauer '59  
 Debra Lynn Beam '12 and  
 James L. Beam  
 Peggy Ann Behm '81  
 Patricia L. Papawick Beronio '57  
 Rosemarie Citeroni Bicksler '69  
 Maureen Callaghan Bigham '63  
 Mary Beth Czaus Bimmerle '86  
 Sara M. Pletcher Bluhm '08  
 Leslie A. Bokoski '12  
 Mary Kate Boland  
 Sister Marie Roseanne Bonfini, IHM '57  
 Kathleen A. Bonner '76  
 Carol Vasko Bonnet '75  
 Martha W. Borraccini  
 Jeanne Bortulin  
 Eileen Marie Ross Boyle '80  
 Carol A. Bradley '87 M.A.  
 Daniella M. Bradley '76  
 Jacqueline R. Bradley '71  
 Margaret Ann Bradley '73  
 Mary Rodenhauser Branagan '60  
 Carol Ann Ziegler Breslin '64  
 Clare Kirwan Briody '62  
 Virginia Feller Brosius '80  
 Anne Donnellan Brown '89  
 Mary Theresa Brown '87 M.A.  
 Norma C. Hall Brown '85  
 Mary-Jo Worrell Bundens '64  
 Mary Ann Malinyak Burcin '90  
 Linda L. Francis Burke '93 M.A.  
 Nancy Girvin Burke '68, '00 Ed.D.  
 Daniel Joseph Burns '14  
 Geraldine Ferrari Burton '57  
 Patricia Gorman Burton '59  
 Nancy A. Byrne '59  
 Susan Caccese '69  
 Helen Walsh Callaghan '62  
 Gwen Menton Cantarera '07  
 Patricia Canterino '92, '12 M.A.  
 Lucille A. Grabowski Cantwell '73  
 Marian A. Brennan Cantwell '61  
 Catherine Marrella Caprio '70  
 Nancy Fahy Carey '60  
 Joan Schmidt Carr '59  
 Winifred Aicher Carr '68  
 Barbara Ann Morris Casale '64  
 Rita Schaeffer Caspar '64  
 Elizabeth Cass-Schmidt '74  
 Christine Castiello '67  
 Thomas C. Castner '07 Ed.D.  
 and Joanne C. Castner  
 Patricia Ann Cerchio '79  
 Eileen Monahan Chopnick '73  
 Cynthia Calla Christenson '03 Psy.D.  
 Susan M. Petrarca Cifa '72  
 and Silvio F. Cifa  
 Estelle Donohue Cincotta '60  
 Anna May Clark '80  
 Kathleen Mulhern Clark '70  
 Pauline A. Novak Clark '62  
 Carol Clark-Hutelmyer '75  
 Patricia Carey Cochran '62  
 Ann Pyzik Colduvel '74  
 Patricia Coletti '74  
 Margaret Anne Collins '65  
 Barbara VanHorn Colsey '56 †  
 Patricia Stranen Connelly '70  
 and Gerard J. Connelly  
 Theresa Connelly '03  
 Gayle Conaty Connolly '60  
 G. Scott Cornell '09  
 Lisa Coroniti '82  
 Sheela Worsfold Corry '64  
 Anne Marie McDonnell Corwell '67  
 Roberta Giordano Costigan '65  
 Frances Schoeniger Coughlin '55  
 Carol Peterman Cox '67  
 Catherine Suzanne Culp Cristinzio '64  
 Leslie Ann Culp '82  
 Margaret Short Cumming '68  
 Patricia Forster Cunningham '73  
 Virginia Carr Cunningham '62  
 Virginia Lawinski Cunningham '69, Ph.D.  
 Justin M. Cusick '12  
 Jeanne M. Dagna '12 Ed.D.  
 Anita Maginn Dahlquist '72  
 Judith A. Fasciotti Daley '66  
 Michele Cairo Daloisio '71  
 Joseph P. Darlington, Jr. '82  
 Grant Davis  
 Ann Rudolph Dean '63  
 Mary McQuillen DeCaro '72  
 Kathleen A. Costigan DeHaut '73  
 Antoinette Stoerlein Delaney '59, Ph.D.  
 Patricia DeLucia  
 Marya C. DiTaddeo Dempsey '86  
 Joan Ludwig Denzler '51  
 Joanne C. Devine  
 Maria A. DiBenedetto '75  
 Denise Sullivan Dill '64  
 Salvatore DiNenna '03 Ed.D.  
 Kathleen H. Van Wetering Donnelly '60  
 Margaret M. O'Donnell Donohue '73  
 Graciela Gil Donovan-O'Donnell '69  
 and Jim O'Donnell

Report includes gifts from 7/1/21 to 6/30/22. Every effort has been made to ensure accuracy. We apologize for any errors or omissions made in donor listings. † Indicates deceased



*Donor Spotlight* ◦  
**Mary Ann Valyo**

Mary Ann Valyo’s daughter, Karen Ann, dedicated her life to helping others through her work as a nurse and administrator. For this dedication, Mary Ann established the Karen Valyo, R.N. Memorial Endowed Scholarship. This scholarship helps students follow her daughter’s footsteps into nursing.

Having taken several courses at Immaculata, Karen earned her nursing diploma from Bryn Mawr Hospital in 1983. She loved the nursing field and excelled as an operating room nurse at the University of Penn and Phoenixville hospitals. Karen then branched out to work as a nurse auditor, where she was responsible for managing medical records in several local hospitals. She did such a fantastic job that she launched an in-house auditing system at Pottstown Memorial Hospital, where she was working at the time. With a natural gift for math, Karen seamlessly transitioned to the business side of nursing. She also assisted with clinical trials in cancer with a local pharmaceutical company.

Mary Ann fondly remembers that no matter what role Karen delved into, she always had a great rapport with patients, doctors and her nursing colleagues. The fact that Karen never displayed any interest in a medical career growing up did not prevent her from exploring all aspects of the field once she set her mind to it. Her compassion for the patients in her care is what inspired her.

One Mother’s Day, Mary Ann visited Karen while she was working in the in vitro fertilization unit at the University of Penn Hospital. Mary Ann knew that Karen’s heart went out to these hopeful parents who were doing everything in their power to have a child.

Karen died in 1998 after battling cancer. The scholarship is in recognition of Karen’s dedication to nursing and to support other students who want to make a difference in people’s lives.

“I want Karen to be remembered as being very conscientious; she was exceptionally good with people. I hope the young woman who received the scholarship proves to be the same type of person,” Mary Ann said. Emily Pablo-Medina, a first-generation nursing major, is the first recipient of the scholarship.

Mary Ann realizes that education is expensive, and she wants to also acknowledge Karen’s generosity—including her time, talent and treasure. The scholarship is awarded to a student needing financial assistance and is renewable for all four years. In addition, Mary Ann hopes it helps alleviate some of the nursing shortage.

“I’m just happy that it will get somebody [into a nursing program], because we do need more nurses. It’s a problem,” Mary Ann states.

Reflecting on her daughter’s indelible spirit, dedication and drive, Mary Ann just shakes her head in awe. “She was a go-getter and a very well-rounded person.”

- Jean Doris '53
- Mary E. Kean Dougherty '91
- Jessica Bunsick Downing '05
- Helene M. Delaney Duffy '64
- Mary Anne Burns Duffy '67
- Sue Ann Taber Duffy '72
- Susan E. Duffy '73
- Sharon Dula-Henik '92
- Helen M. Frank Dunigan '56
- Cindy Mark Egnotovich '79
- Napoleon Elortegui
- Kathleen Costello Eng '72
- Stephanie Slawinski Erdman '72
- Margaret Erickson-Menton '78
- Marie Faccioli Erkes '62
- Kathie Estock '99 Ed.D.
- Carolyn Fagan '80
- Elizabeth Gotshall Faunce '90, Ph.D.  
and James G. Faunce, IV
- Margaret Connolly Federico '64
- Karen Magda Fein '74  
and Kenneth W. Fein
- JoAnn Ferrara-Waity '67
- Helen Jeanne Dwyer Festa '69
- Eileen M. Fiorentino Figueroa '57
- Marita Donohue Fisher '67
- Natalie Fisher '95 M.A.
- Anne Fitzgerald '64
- William J. Flanagan
- Barbara M. Flanigan '68
- Anne Louise Juska Flora '63
- Jane A. Flynn '69
- Eleanor A. Fogarty '91
- Maureen Donahue Fogerty '97
- Nicole Marie Lacoste Folks '91
- Alice Duff Foreman '69
- Maureen Neylon Fox '72
- Eileen Carr France '60
- Judy A. Franco '01
- Barbara Fritsche '66
- Cynthia Gabrielli '74, D.O.  
and Karl R. Autenrieth
- Patricia A. Gallagher
- Frank L. Garritano '08 Ed.D.
- Janet Maginn Garrity '78
- Mary Ann T. Gasparro '67
- Catherine Shipman Gavin '68
- Mary Anne Bensinger Gearing '63
- Gemma C. Geigert '99 Ed.D.
- Jeanne M. Gelbach '66
- Anne M. Gellrich '83
- Rosemary Benson Gennaro '54
- Melissa Smola George '00, D.O.
- Janice Bowers Gess '67
- Christine A. Giardini '99 M.A.
- Lynn E. Anderson Gibson '65
- Margaret M. Gill '74

*Report includes gifts from 7/1/21 to 6/30/22. Every effort has been made to ensure accuracy. We apologize for any errors or omissions made in donor listings. † Indicates deceased*



Mary E. Gillane '76  
 Margaret E. Gillis '68  
 Elizabeth E. Ginty '01  
 Patricia Keller Giusti '68  
 Elizabeth S. Gladulich '08  
 Joseph Gnias  
 Pamela Tart Goergen '63  
 Catherine R. Schwarz Gold '71  
 and James Gold  
 Kathryn W. Killian Gordon '58  
 Mary Erickson Gorski '80  
 Deborah A. Hutter Goss '93, M.D.  
 Helen Kelley Grady '61  
 Marita Roellig Green '61  
 Mary V. Hooten Green '76  
 Winifred McGonigal Green '50  
 Denise Impagliazzo Griffiths '67  
 Diane C. Gryger '77  
 Anne Marie Leonard Guicheteau '63  
 Virginia E. Guyer '99  
 Bridget A. Haines-Frank '96  
 Barbara A. Lalinsky Hale '65  
 Ralph Hall and Cinda Hall  
 Susan T. Kane Hally '90  
 Beth Anne Hoffman Hansel '84  
 Mary McCusker Harkins '70  
 William Harkins and Marie Harkins  
 Sara D. Harris '87  
 Rita Bensingier Hartleroad '67  
 Joan R. Henning Healy '59  
 Elsie Blum Heaney '59, '91 M.A.  
 Doreen M. Heath  
 Judith Ivers Hedtke '71

Kathleen M. O'Grady Hendricks '68  
 Sister Mary Henrich, IHM '72  
 Suzanne Feiring Heron '71  
 Katherine Jespersen Hill '72  
 Sara Marie Hoben '60  
 Judith A. Hoffman '87  
 Mary Elizabeth Hoffman '95  
 Margaret Monahan Hogan '63, Ph.D.  
 Barbara Smith Holtz '56  
 Patricia Modrys Hourigan '63  
 Kathleen Hughes '73  
 Joseph E. Hutter and  
 Mary Anne Hutter  
 Janet Ficcadenti Izzo '70  
 Estate of Mary E. Jacqueline '76, M.D. †  
 Kathleen James '74  
 Clare Jameson '80  
 John Jameson '94, '97 M.A.  
 Sister Paula Regina Jameson, IHM  
 '82, Ph.D.  
 Regina Parisien Jean-Claude '84  
 Amy Pontzer Jones '90  
 Joseph P. Jones and Wendy Jones  
 Rosemarie Marcaccio Joseph '73  
 Patricia Duffy Juliano '83  
 Mary E. Draye Jurgensen '60  
 Lisa Kamp '01  
 Jeanne Marie Ross Karaim '70  
 Justine Maksymik Kayes '61  
 Sister Marie Hubert Kealy, IHM '57, Ph.D.  
 Karen Licorish Keane '80, D.O.  
 Anne E. Cavanaugh Kearn '57  
 and Robert A. Kearn

Joseph Keenan and  
 Rosemarie B. Keenan  
 Maureen O'Neil Kehoe '79  
 Anne Marie Kelly  
 Carol C. Kelsall '15 Ed.D.  
 Pamela Carey Kenah '66  
 Mary Kay Heim Kennedy '72  
 Sheila O'Brien Kennedy '72  
 Robert Bruce Kern and Joan Kern  
 Ross Kershey  
 Frances Gallivan Kilduff '71  
 Ann Herd Klein '75  
 Heather B. Koelle '84  
 Margaret A. Kuhn Kolarsick '68  
 Eileen Curran Kondrad '68  
 Frances Wisniewski Kormes '65  
 Lucile C. Kramer '65  
 Mary Louise Cassidy Kramer '70, Esq.  
 and John M. Kramer, Ph.D.  
 Susan Sackett Kratzinger '68  
 Catherine Luongo Kraus '70  
 Karen Kropp '99 A.A., '00 B.A.  
 Bartholomew C. LaGrassa  
 Fernanda Berghardt Lamb '65  
 Mary Ann Lang '71  
 Kathleen Kiely Lapusheski '62  
 Patricia Crea LaRocco '71, M.D.  
 Eleanor Gualtiere Lashley '65  
 Mary Zurbach Last '67, Ph.D.  
 Virginia Aprigliano Laughlin '71  
 Mary Sheehan Leahy '54  
 Robert K. Leardi, M.D.  
 Kristy A. Rupp Legenstein '91

Barbara A. Lettiere '72, M.A., M.B.A.  
 Anna Pullan Levine '61  
 Ruth Mark Lew '52  
 Mary Lou Blake Lewandowski '70  
 Claudette Schilling Leyden '62  
 Ellen DeJulio Lilly '68, Ed.D.  
 Susan Garrett Lione '66  
 Kathleen Mendte Logan '60  
 Bernadette S. McLaughlin Louden '79  
 Louise Anne Cipriani Luongo '70  
 Earlin Lutz, Ph.D.  
 Sandra Dwyer Maas '76  
 Bernadette L. Maguire '57  
 Gladys Grant Maguire '58  
 Cecelia Maher '74  
 Antoinette Iaquinto Makowski '60  
 Kathleen Costello Malin '78  
 Judy Beck Malloy '62  
 Michelle Ventura Mallozzi '73  
 Mary Anne Roddy Malone '74  
 Janice Haller Mancuso '68  
 Judy Marra Martelli '75  
 Kathleen A. Martin '96  
 Nicole Bertolini Martin '99  
 Janice Gardler Mattera '80  
 Karen DeLucia Matweychuk '83  
 Lesley Maurer '05  
 Carol McCadden Mayer '79  
 and Louis J. Mayer, Ed.D.  
 Jo Anne McAdams '84, '87 M.A.,  
 '96 Ed.D. and Frank McAdams  
 Paul Robert McAndrew '10, '15 M.A.  
 Conal McBride '07



**Pictured:** The Mighty Macs 50th Anniversary Luncheon

Report includes gifts from 7/1/21 to 6/30/22. Every effort has been made to ensure accuracy. We apologize for any errors or omissions made in donor listings. † Indicates deceased



**Pictured:** The Class of 2022 Rose Arbor Celebration

Kathleen McMahon McCabe '69  
 Joyce A. McCaffrey '66, M.D.  
 Mary Emily Oakes McCormick '66  
 Kathy Taglianetti McCrea '87  
 Maureen H. McCullough '75, J.D.  
 Margaret E. Thomas McDermott '69  
 Barbara E. Gross McDonald '61  
 Mary Whalen McDonnell '64  
 Marge Hutchinson McElroy '72  
 Margaret Sculley McGuckin '56  
 MarliSS McGuinness  
 Mary Eileen Farrell McHugh '58  
 Joanne A. McKee '04 and  
 Bernard M. McKee  
 Joanne McKee '63  
 Kathleen H. McKee '74, '81 B.S., Ph.D.  
 Suzanne Trotter McKeever '03 M.A.  
 Mary Jane Almond McKenna '57  
 Elizabeth Burnes McKinney '44  
 Jane Ann McLaughlin '54, Ed.D.  
 Maria Castaldi McLaughlin '88  
 Margaret Masi McManus '69  
 Marita McManus '60  
 Rhoda Melson McQuiston '56  
 Mary Lou Dwyer McSpirit '62  
 Sheila M. Meehan '72  
 Alberta Kargl Mellert '59  
 Maryann M. Citeroni Mendel '65  
 Gary Michelson  
 Lawrence C. Miller, D.M.D.  
 Francis Xavier Milles '92 M.A.  
 Charlene Millheim  
 Sister Denise Mollica, IHM '69  
 Joan Gagliardi Monahan '63  
 Steady Moono '02 Ed.D.  
 Patricia A. Hatchard Moore '62  
 Maria de los Angeles Morales '78

Douglas K. Mountz '06 Ed.D.  
 Beth Ann Mull '96 M.A., '02 Psy.D.  
 Holly Jean Schmuker Mullan '85  
 and Dennis Mullan  
 Nina M. Mulrooney '76  
 Robert Mundy  
 Kathleen Costello Murphy '75  
 Kathleen Dugan Murphy '60  
 Margaret M. Murphy '82  
 Mary K. Montague Murphy '61  
 Suzanne Yohey Naughton '64  
 Joanna Kubicki Nealon '65  
 Suzanne M. Huck Neubauer '72, Ph.D.  
 Virginia Neumer '84  
 Marilyn Jeanne Nigro '74  
 Margaret Niven '72  
 Jean Morrissey Noble '51  
 Karen Filbey Nocella '83  
 Phyllis Eyth O'Brien '64  
 Judith Heim O'Dell '70  
 Marie Lyons O'Donnell '61  
 Helen O'Connell O'Grady '63  
 Susan M. Forsyth O'Grady '72  
 Francis Olbrych  
 Roberta Maier Olliver '62  
 Margot Ann O'Neill '74  
 Mary Jane Turner O'Rourke '75  
 Victoria Sciafani Orzechowski '67  
 and Leonard Orzechowski  
 Jo Anne L. McAdams Osborn '84  
 and Edward T. Osborn, Jr.  
 Lynn Hubbard Ouellette '66  
 Mary Boyd Palascak '68  
 Mary Lou McMenamy Parker '67, Esq.  
 Jaye L. Gluckler Parsons '64  
 Leo D. Parsons and  
 Maryanne M. Parsons

Richard M. Parsons and  
 Claudia Parsons  
 JoAnn M. Paslawsky '73  
 Elizabeth Trout Pawlowski '58  
 Elizabeth T. Payer-Pedone '69  
 Loreta Chirico Perthes '70  
 Kelly Ann Philbin '91, '07 M.A., Ph.D.  
 Barbara A. Piatka '62, Ph.D.  
 Sharon Rose Pierce '69  
 Bobbijo Grillo Pinnelli, Ed.D.  
 Catherine M. Pipan '87, M.D.  
 Ann Wawrzak Pirnot '65  
 Marianina Pletcher  
 Marie Louderback Polifko '69  
 Donna Gibson Poling '65  
 Grace Sharon Arena Pomrunk '67  
 Rita Barr Porreca-Ward '64  
 Sandra Porter '81  
 Justine O'Brien Post '52  
 Dolores Nancy Potts '74, '05 M.A.  
 Dolores Giordano Prokapus '56  
 Vreni Ranjo  
 Eunice Timoney Ravenna '92  
 Paula Weidel Refi '67  
 Roberta Regetta '81  
 Anne Regina '76  
 Janice Heiken Reilly '62  
 Maria A. Terry Remley '86  
 Denise Charette Rentschler '84  
 Marion O'Connor Renzetti '62  
 Jacqueline Perricone Resavage '68  
 Eleanore C. Miragliotta Richard '65  
 Barbara A. Brinton Richards '84  
 Dorothea Magowan Richardson '77  
 Carl C. Riley  
 Annette Rineer-Tighe '86 M.A.

Adriana Kalpas Riordan '67  
 and John F. Riordan  
 Maria Rivera-Trudeau '64  
 Ruth L. Rizzo '73, M.D.  
 Scott A. Rombach and  
 Pamela J. Rombach  
 Maryann E. Hammeke Romeo '67  
 Rosemary Ronan '60  
 Cecilia Gross Rose '75  
 Mary Jane Walters Ryan '72  
 Sister Joan Rychalsky, IHM '70  
 Nancy Castiglioni Sarcione '49 †  
 Regina Cerino Saude '65  
 Robert J. Saum  
 Marie Scandone '71  
 Paula Mroz Scarfo '82  
 April Barra Scepaniski '02  
 Maryann C. Schalleur '65  
 Eileen Jasienski Schiappa '72  
 Elizabeth Herbert Schiesser '62  
 Mary Murphy Schmelzer '62, Ph.D.  
 Geraldine McGowan Schmid '67  
 Theresa Ovecka Scholl '64, Ph.D.  
 The Estate of Elinor Schoppet '60, Ph.D. †  
 Valarie Schwarz '68  
 Margaret McGlone Scichili '71  
 Margaret Kelly Seery '64  
 Alma Seidel '99, '01 M.A.  
 Rosalia Cortes Sepan '56  
 Barbara Crea Shannon '70  
 Ann Hankison Sharpe '54  
 Marilyn Manak Sheils '02  
 Jean Wagoner Shingle '90, Ph.D.  
 Margaret O'Brien Shoemaker '68  
 Utang Fain Shorter '67  
 Anita Williamson Siegenthaler '60  
 Patricia Valyo Skahan '83

Report includes gifts from 7/1/21 to 6/30/22. Every effort has been made to ensure accuracy. We apologize for any errors or omissions made in donor listings. † Indicates deceased



Susan Cipollini Skahan '81  
 Rose Kenny Slizewski '66  
 Kathleen Freney Smith '90  
 Joseph D. Smola and Melanie Smola  
 Joanne Korpanty Solecki '80  
 and Thomas J. Solecki  
 Judith Facenda Souders '67  
 Lori Heffelfinger Spoor '91  
 Margaret Anne Stein '68  
 Anne Campo Strasser '62  
 Elizabeth M. Strauch '11  
 Mary Hannahoe Stumhofer '62  
 Howard Sundwall  
 James W. Supplee '89 M.A., '03 Psy.D.  
 Mary Johnson Switkay '79  
 Lydia S. Szyjka '09 M.A.  
 Robert M. Tafuro and Carol B. Tafuro  
 Moira A. Frost Tamburello '73  
 Cristina M. Tansey '11 M.S.N., '21 Ed.D.  
 Angela M. Tekely, Ed.D.  
 William Telford, III and  
 Nancy Lee Telford  
 Kenneth B. Tenley  
 Kathleen M. Theilacker '02, '07 M.A.  
 Anne Carroll Thompson '59  
 Carol A. Ellis Tomlinson '68  
 Elizabeth Ann Kempf Townsley '82  
 Lorraine Ferrari Tracy '63  
 Marie Menna Trivelli '59  
 Anne M. Tyrrell '72  
 Rita Mancuso Tyson '65  
 Helen M. Higgins Uhl '64  
 Karha Us '75  
 Dora J. Vardaro '58  
 Roberta Wright Verostick '67  
 Barbara A. Virtue

Cecelia L. Wade  
 Mary Ann Castelli Walsh '66  
 Mimi Draper Walsh '63  
 and Frank E. Walsh, Jr.  
 Carolyn Lenz Warner '62  
 Patricia C. Washburn '91 M.A.  
 Eileen Helm Weaver '97 Ed.D.  
 Elizabeth Ann Weber '12 Ed.D.  
 Mary S. Weeks '73  
 Mary M. Wehrmann  
 Theresa M. Weidenbaugh '06 Ed.D.  
 Catherine McHenry Weiss '63  
 Mary Ann Smith West '68  
 Mary Beth McGrath Westmoreland  
 '88  
 Kathleen Quinlan Whalen '62  
 Earl B. White, Jr.  
 Joanne White '94 M.A.  
 Teresa Fox White  
 Charlotte Marie France Wilks '67  
 Barbara Williams Willis '83  
 Therese M. Thistle Willis '60  
 Sally A. Tamburello Winterton '68, Ed.D.  
 Louise Gaul Witham '70  
 David D. Witulski and  
 Elizabeth Witulski  
 Sharon A. Slimbaugh Wolf '64  
 Sarah R. Wolfe '06, '10 M.A.  
 Carol Ann Wirth Wolff '70  
 Julianne Kleponis Yarwood '83  
 Jean Roney Yoder '60  
 Anita L. Giuliani Young '57  
 Barbara Naiman Young '61, M.D.  
 Amy L. Zimmerman '95  
 Marianne DiCecco Zollers '75

## GIVING BY CLASS

Immaculata is most grateful to the following alumni donors for their generous support during the 2021–2022 fiscal year. Alumni are listed by year in which they obtained their first IU degree.

**CLASS OF 1941 | PARTICIPATION: 100%**  
 Kathleen Gildea Kelley †

**CLASS OF 1944 | PARTICIPATION: 33%**  
 Elizabeth Burnes McKinney

**CLASS OF 1946 | PARTICIPATION: 29%**  
 Eva Adams Atkinson  
 Margaret Ward Kelly

**CLASS OF 1947 | PARTICIPATION: 11%**  
 Justine Hawthorn Adams

**CLASS OF 1948 | PARTICIPATION: 6%**  
 Ellen O'Connell Willemin

**CLASS OF 1949 | PARTICIPATION: 25%**  
 Nancy Castiglioni Sarcione †  
 Rose Marie Wells

**CLASS OF 1950 | PARTICIPATION: 11%**  
 Winifred McGonigal Green  
 Dorothy G. Wolper †

**CLASS OF 1951 | PARTICIPATION: 20%**  
 Sister Marie Lorraine Bruno, IHM †  
 Joan Ludwig Denzler

Joan Raidy Gallagher  
 Jean Morrissey Noble

**CLASS OF 1952 | PARTICIPATION: 12%**  
 Ruth Mark Lew  
 Joan Kerner Meier †  
 Justine O'Brien Post

**CLASS OF 1953 | PARTICIPATION: 12%**  
 Jean Doris  
 Marie Vesce Hallman

**CLASS OF 1954 | PARTICIPATION: 23%**  
 Anonymous (1)  
 Theresa A. Papan Demanop  
 Rosemary Benson Gennaro  
 Mary Sheehan Leahy  
 Jane Ann McLaughlin, Ed.D.  
 Veronica Gorman Raidy  
 Ann Hankison Sharpe

**CLASS OF 1955 | PARTICIPATION: 10%**  
 Frances Schoeniger Coughlin  
 Helen Flannery Meyers  
 Margaret Kennedy Wagner

**CLASS OF 1956 | PARTICIPATION: 30%**  
 Barbara VanHorn Colsey †  
 Marlene Biegler Cooney  
 Helen M. Frank Dunigan  
 Barbara Smith Holtz  
 Jean L. deVecchis Johnson  
 Margaret Sculley McGuckin  
 Rhoda Melson McQuiston  
 Dolores Giordano Prokapus  
 Rosalia Cortes Sepan  
 Kathryn Callinan Simpson



**Pictured L to R:** The President's Dinner; Circle of Giving Dinner

Report includes gifts from 7/1/21 to 6/30/22. Every effort has been made to ensure accuracy. We apologize for any errors or omissions made in donor listings. † Indicates deceased



**Pictured:** Faculty Emeriti Luncheon

**CLASS OF 1957 | PARTICIPATION: 28%**

Patricia L. Papawick Beronio  
 Sister Marie Roseanne Bonfini, IHM  
 Geraldine Ferrari Burton  
 Eileen M. Fiorentino Figueroa  
 Julia Sullivan Harkins  
 Helen C. Troy Hayes  
 Sister Marie Hubert Kealy, IHM, Ph.D.  
 Anne E. Cavanaugh Kearn  
 Alvina DeLazzari Long  
 Bernadette L. Maguire  
 Mary Jane Almond McKenna  
 Mary Louise Hanlon McLaughlin  
 Eleanor McLaughlin O’Kane  
 Rosemary Scerni  
 Anita L. Giuliani Young

Jane Hobin Fell  
 Madeleine B. Iapalucci Frost  
 Joan R. Henning Healy  
 Elsie Blum Heaney ’91 M.A.  
 Clare Cute Iniewicz  
 Regina Curry Lindsay  
 Beatrice Braun Lock †  
 Mary Ann Per Louise Manlio  
 Nancy James Mastrian  
 Eleanor Henry McCurley  
 Alberta Kargl Mellert  
 Eileen Niland Stein  
 Mary McCloskey Terry  
 Anne Carroll Thompson  
 Marie Menna Trivelli

Kathleen Dugan Murphy  
 Mary Sheehy Pratt  
 Rosemary Ronan  
 Elizabeth Brennan Schnepf  
 Elinor Schoppet, Ph.D. †  
 Anita Williamson Siegenthaler  
 Mary Topper  
 Therese M. Thistle Willis  
 Jean Roney Yoder

Sister Kathleen C. Doult, IHM, D.M.A.  
 Lorraine Paolini Edwards  
 Marie Faccioli Erkes  
 Doris Dickinson Johnson  
 Kathleen Kiely Lapusheski  
 Claudette Schilling Leyden  
 Judy Beck Malloy  
 Mary Lou Dwyer McSpirit  
 Patricia A. Hatchard Moore  
 Roberta Maier Olliver  
 Barbara A. Piatka, Ph.D.  
 Rafaella Madonna Rasi  
 Janice Heiken Reilly  
 Marion O’Connor Renzetti ’62  
 Elizabeth Herbert Schiesser  
 Mary Murphy Schmelzer, Ph.D.  
 Anne Campo Strasser  
 Mary Hannahoe Stumhofer  
 Carolyn Lenz Warner  
 Kathleen Quinlan Whalen  
 Sister Elizabeth Woodward, IHM ’90 M.A.

**CLASS OF 1958 | PARTICIPATION: 26%**

Margaret C. Rademaker Bielen  
 Dolores Gibson Cipolone  
 Mary Jane Fuoco Dye  
 Gertrude Michel Forte, Ph.D. †  
 Kathryn W. Killian Gordon  
 Joanne Seeman Kolen  
 Gladys Grant Maguire  
 Mary Eileen Farrell McHugh  
 Elizabeth Trout Pawlowski  
 Dora J. Vardaro  
 Christine B. Campbell Whelehan

**CLASS OF 1960 | PARTICIPATION: 33%**

Frances A. Short Bailey  
 Mary Rodenhauer Branagan  
 Patricia Quinlan Bray  
 Nancy Fahy Carey  
 Estelle Donohue Cincotta  
 Sheila A. Clifford  
 Gayle Conaty Connolly  
 Kathryn A. Guinan Connolly  
 Kathleen M. Sullivan Cosgrove  
 Marie T. Reilly DeVries  
 Kathleen H. Van Wattering Donnelly  
 Eileen Carr France  
 Elizabeth Rose Francis  
 Carol A. Fowler Heineman  
 Sara Marie Hoben  
 Patricia Drummond Johnson  
 Mary E. Draye Jurgensen  
 Kathleen Mendte Logan  
 Marilyn L. Young Maher  
 Antoinette Iaquinto Makowski  
 Anne K. Holland McGinley  
 Marita McManus

**CLASS OF 1961 | PARTICIPATION: 23%**

Jo Anne DiLauro Alexander  
 Toni Girard Barbour  
 Mary Kay Schmidt Breen  
 Marian A. Brennan Cantwell  
 Anne Marie Whalen Devine  
 Helen Kelley Grady  
 Marita Roellig Green  
 Catherine E. Dolan Heimerl  
 Bernie Douglas Kallfelz  
 Justine Maksymik Kayes  
 Marlene Cotsack Kelly  
 Anna Pullan Levine  
 Eileen Campbell Mallouk  
 Patricia Hawes Martin  
 Barbara E. Gross McDonald  
 Mary K. Montague Murphy  
 Marie Lyons O’Donnell  
 Mary Ann Kurz Popma  
 Barbara Naiman Young, M.D.

**CLASS OF 1963 | PARTICIPATION: 30%**

Sally Kerigan Austin  
 Justine C. Boni Baker, Ph.D.  
 Maureen Callaghan Bigham  
 Mary Lee Theresa Bradley  
 Ann Rudolph Dean  
 Barbara M. Fahy, Ph.D.  
 Anne Louise Juska Flora  
 Mary Anne Bensinger Gearing  
 Pamela Tart Goergen  
 Anne Marie Leonard Guicheteau  
 Roseanne Salvatore Hofmann, Ed.D.  
 Margaret Monahan Hogan, Ph.D.  
 Patricia Modrys Hourigan  
 Dorothy M. Crenny Kenney  
 Yvonne M. Falcon Kuemmerle  
 Patricia A. Feldman Lind

**CLASS OF 1959 | PARTICIPATION: 34%**

Ruth Ann McCahon Baney ’93 M.A.  
 Laverne Gavron Bauer  
 Marie C. Bridy  
 Elizabeth Foley Burns  
 Patricia Gorman Burton  
 Nancy A. Byrne  
 Joan Schmidt Carr  
 Antoinette Stoerlein Delaney, Ph.D.

**CLASS OF 1962 | PARTICIPATION: 26%**

Anonymous (1)  
 Clare Kirwan Briody  
 Helen Walsh Callaghan  
 Pauline A. Novak Clark  
 Patricia Carey Cochran  
 Virginia Carr Cunningham  
 Rosemary Kear Donnestad

*Report includes gifts from 7/1/21 to 6/30/22. Every effort has been made to ensure accuracy. We apologize for any errors or omissions made in donor listings. † Indicates deceased*



Joanne McKee  
 Joan Gagliardi Monahan  
 Helen O'Connell O'Grady  
 Louise Antonucci Pascale  
 Lorraine Ferrari Tracy  
 Mary Ciavarelli Van Dervort  
 Mimi Draper Walsh  
 Catherine McHenry Weiss  
 Lynne Griffin Yancey

**CLASS OF 1964 | PARTICIPATION: 31%**

Virginia M. Walz Alpaugh  
 Mary Tryson Arnold  
 Marlene M. Lambiase Auxer  
 Carol Ann Ziegler Breslin  
 Mary-Jo Worrell Bundens  
 Barbara Ann Morris Casale  
 Rita Schaeffer Caspar  
 Sheela Worsfold Corry  
 Catherine Suzanne Culp Cristinzio  
 Mary F. Tacoslosky Curvey  
 Denise Sullivan Dill  
 Helene M. Delaney Duffy  
 Margaret Connolly Federico  
 Rita Hegedus Ferraro  
 Anne Fitzgerald  
 Susan Donohue Gallagher  
 Constance Vecchione Hershey  
 Diane Lucchesi Householder  
 Agnes Devine Howkins  
 Jo Anne Marrone  
 Mary Whalen McDonnell  
 Barbara Anne O'Connor Mooney  
 Dianne Majer Mundy  
 Suzanne Yohey Naughton  
 Frances Fowler Nottleson  
 Phyllis Eyth O'Brien  
 Jaye L. Gluckler Parsons  
 Irene Polomski  
 Rita Barr Porreca-Ward  
 Maria Rivera-Trudeau  
 Theresa Ovecka Scholl, Ph.D.  
 Margaret Kelly Seery  
 Cathy Drennen Siegl  
 Helen M. Higgins Uhl  
 Helena Gowan Volansky  
 Sharon A. Slimbaugh Wolf

**CLASS OF 1965 | PARTICIPATION: 25%**

Margaret Anne Collins  
 Roberta Giordano Costigan  
 Frances Columbo DiLenge  
 Dorothy Aires Fitts  
 Andrea I. Vescia Foldessy  
 Lynn E. Anderson Gibson  
 Barbara A. Lalinsky Hale  
 Susan Ideman Hamilton  
 Kathleen M. Kelly †



Frances Wisniewski Kormes  
 Lucile C. Kramer  
 Fernanda Berghardt Lamb  
 Eleanor Gualtiere Lashley  
 Anna Welikonich Lee  
 Brenda A. Koetzner Lyons  
 Rita M. McLaughlin MacIndoe  
 Barbara Nicoletta Maiorano  
 Sandra Shuler McCormack  
 Maryann M. Citeroni Mendel  
 Joanna Kubicki Nealon  
 Ann Wawrzak Pirnot  
 Donna Gibson Poling  
 Patricia J. Ebersole Reiter  
 Eleanore C. Miragliotta Richard  
 Elaine M. Rizzi Salvo  
 Regina Cerino Saude  
 Marianne DiPietro Scales  
 Maryann C. Schalleur  
 Patricia Sullivan  
 Rachel J. Franzini Suraci  
 Lynn Bender Tracey  
 Rita Mancuso Tyson

**CLASS OF 1966 | PARTICIPATION: 22%**

Mary Duffy Campbell  
 Cynthia Soffel Clark  
 Eileen Mullarkey Clark  
 Patricia Looby Cotton  
 Judith A. Fasciott Daley  
 Barbara Fritsche  
 Jeanne M. Gelbach  
 Judith Howell Gemmet  
 Mary K. Jordan, Ph.D.  
 Joan Ciesielski Kasper  
 Pamela Carey Kenah  
 Nancy D. Deatrack LaRocca  
 Susan Garrett Lione

Joyce A. McCaffrey, M.D.  
 Mary Emily Oakes McCormick  
 Maureen Dugan Morley  
 Antoinette O'Connell  
 Lynn Hubbard Ouellette  
 Marie Olivieri Russell, M.D.  
 Millie Ecock Seeds  
 Marianne M. Specht Siecko  
 Rose Kenny Slizewski  
 Patrice McElroy Temple-West  
 Mary E. Agnew Vernick  
 Mary Ann Castelli Walsh  
 Rosemarie Sickora Wert

**CLASS OF 1967 | PARTICIPATION: 41%**

Geraldine Bell  
 Patricia Riggio Bell  
 Virginia Burns Brandt  
 Donna Manus Burrell  
 Christine Castiello  
 Anne Marie McDonnell Corwell  
 Carol Peterman Cox  
 Christine Demer  
 Anne McDonald DePrince  
 Donna Fizzano DeRitis  
 Kathleen Brogan Dickey  
 Mary Anne Burns Duffy  
 Edwina Tancredi Eckenroth  
 JoAnn Ferrara-Waity  
 Marita Donohue Fisher  
 Judith Greeley French  
 Mary Ann T. Gasparro  
 Patricia Brown Gaughan  
 Jane M. Gerlach  
 Janice Bowers Gess  
 Judy Garthwaite Grifa  
 Denise Impagliazzo Griffiths  
 Rita Bensinger Hartleroad

Cynthia Kane Horgan  
 Bridgetnetta Gleeson Jones  
 Kathleen Cooper Kulesza  
 Mary Zurbach Last, Ph.D.  
 Rita M. Iacovelli Lombardo  
 Marguerite Dougherty MacDonald  
 Lucille Lamontagne Markle  
 Anne Marie Phillips Martin  
 Rebecca Dallett O'Hanlon  
 Victoria Sclafani Orzechowski  
 Mary Lou McMenamy Parker, Esq.  
 Grace Sharon Arena Pomrunk  
 Paula Weidel Refi  
 Adriana Kalpas Riordan  
 Melanie Donnan Rittenhouse  
 Maryann E. Hammeke Romeo  
 Geraldine McGowan Schmid  
 Barbara Weathers Seaborn  
 Utang Fain Shorter  
 Roseanne Fitzpatrick Shveima  
 Francine Freimann Snyder  
 Judith Facenda Souders  
 Linda Bertotti Southerling  
 Rosanne Cappiello Taylor  
 Roberta Wright Verostick  
 Carol Tofani Wareikis  
 Carol Szmurlo Whiteman  
 Charlotte Marie France Wilks

**CLASS OF 1968 | PARTICIPATION: 31%**

Mary Anne Aldworth Adler  
 Margaret McAlary Blomstedt  
 Mary J. Ferguson Booker  
 Eileen Kain Buoni  
 Nancy Girvin Burke '00 Ed.D.  
 Winifred Aicher Carr  
 Carol Consorto  
 Barbara Consorto

Report includes gifts from 7/1/21 to 6/30/22. Every effort has been made to ensure accuracy. We apologize for any errors or omissions made in donor listings. † Indicates deceased

OUR GENEROUS DONORS

Margaret Short Cumming  
Kathleen Holtz Deal, Ph.D.  
Jacqueline Ann Thompson Deckel  
Alana Gullotta DePrisco  
Barbara E. Courtney Devoto  
Sharon O'Keefe Dooley  
Sister Kathleen Dullea, SHCJ  
Mary Anne Angelozzi Ellmer  
Barbara M. Flanigan  
Isabelle Visceglia Gapstur  
Elizabeth Brashears Garvin  
Catherine Shipman Gavin  
Margaret E. Gillis  
Victoria Guiteras Giunta-Abbott  
Patricia Keller Giusti  
Kathleen M. O'Grady Hendricks  
Lillian A. Troyan Hood  
Joan M. Lockard Howard  
Margaret A. Kuhn Kolarsick  
Eileen Curran Kondrad  
Susan Sackett Kratzinger  
Susan La Bella  
Lynn Lewis  
Ellen DeJulio Lilly, Ed.D.  
Claire Undercoffler Madden  
Janice Haller Mancuso  
Vera Obuszcak  
Mary Boyd Palascak  
Joanne Varga Paulino  
Jacqueline Perricone Resavage  
Valarie Schwarz  
Margaret O'Brien Shoemaker  
Margaret Anne Stein  
Kathryn Peterson Teeple  
Judith E. Burpo Thomas  
Carol A. Ellis Tomlinson

Marcella O'Neill Wade  
Mary Noel Wendel  
Mary Ann Smith West  
Sally A. Tamburello Winterton, Ed.D.  
Joan Archangelo Yue, J.D.

**CLASS OF 1969 | PARTICIPATION: 26%**

Eva T. Adams  
Kathryn Hoover Alexander  
Rosemarie Citeroni Bicksler  
Susan Caccese  
Molly E. Thomas Churnetski  
Francine Reilly Civillico  
Linda Henning Contreras  
Virginia Lawinski Cunningham, Ph.D.  
Graciela Gil Donovan-O'Donnell  
Helen Jeanne Dwyer Festa  
Jane A. Flynn  
Alice Duff Foreman  
Lenore McCulliss Gaffney  
Sister Helen Dolores Gilroy, IHM  
Janice M. Murphy Gruber  
Joann Cunningham Hoffman  
Madonna Smith Jenemann  
Christine Visceglia Kanter  
Margaret Bransfield Maguire  
Therese Puzzutelli Marlin  
Kathleen McMahan McCabe  
Margaret E. Thomas McDermott  
Kathleen Daley McKinley, Ph.D.  
Margaret Masi McManus, Ph.D.  
Melanie A. Macko Miles  
Sister Denise Mollica, IHM  
Cathleen A. Cleary Mundry  
Elizabeth T. Payer-Pedone  
Sharon Rose Pierce

Marie Louderback Polifko  
Eileen Galdo Schank  
Eileen Jaeger Varia

**CLASS OF 1970 | PARTICIPATION: 30%**

Constance Murray Anders  
Carol Jean Jordan Anderson  
Kathryn Kroeger Anderson  
Alice McGrath Berringer  
Sister Monica Joseph Cadden, IHM  
Catherine Marrella Caprio  
Ellen M. Hayes Cerritelli  
Kathleen Mulhern Clark  
Patricia Stranen Connelly  
Nina DiFilippo Giunta  
Helen Cattalo Halpin  
Mary McCusker Harkins  
Janet Ficcadenti Izzo  
Jeanne Marie Ross Karaim  
Laurie A. Reilly Kennedy  
Mary Louise Cassidy Kramer, Esq.  
Catherine Luongo Kraus  
Izanne Leonard-Haak  
Mary Lou Blake Lewandowski  
Louise Anne Cipriani Luongo  
Kathryn Speaker MacNett, Esq.  
Elizabeth Giordano McKinnon  
Anne Meister  
Judith Heim O'Dell  
Carol Cherry Otis  
Patricia Panichelli Papiez  
Loreta Chirico Perthes  
Margaret Mills Rosa  
Sister Joan Rychalsky, IHM  
Barbara Crea Shannon  
Ann Marie Conway Six

Mercedes Maria Toruno-Sanchez  
Margaret Ann Ulrich  
Mary Monastra Verdi  
MaryLou Carlbom Wilhelm  
Louise Gaul Witham  
Carol Ann Wirth Wolff  
Sharon Reed Zogby

**CLASS OF 1971 | PARTICIPATION: 28%**

Rosemary Lynch Alexander  
Suzanne Cattanea Billen  
Geraldine M. Boyle-Kramer  
Jacqueline R. Bradley  
Sister Anne Marie Burton, IHM, Ed.D.  
Rose Ann Salerno Carr  
Margaret DuBois Connors  
Michele Cairo Daloisio  
Charlene Carnvale Delaney  
Joanne Boylan Doherty  
Sandra Galetto D'Onofrio  
Catherine R. Schwarz Gold  
Susan E. Greb Golding  
Joanne Galvin Goodrick  
Donna Golanoski Gorka  
Mary Schlitzer Hauck  
Judith Ivers Hedtke  
Suzanne Feiring Heron  
Maryann Salotto Hildick  
Susan Langan Bailey Hust  
Eileen Mullins Huston  
Regina A. Campetti Jewell  
Frances Gallivan Kilduff  
Blanche Cantwell Kilpatrick  
Mary Ann Lang  
Patricia Crea LaRocco, M.D.  
Virginia Aprigliano Laughlin



**Pictured:** The 2021 IU Golf Invitational

Report includes gifts from 7/1/21 to 6/30/22. Every effort has been made to ensure accuracy. We apologize for any errors or omissions made in donor listings. † Indicates deceased





**Pictured:** The Silver Macs Sips & Dips Event

Victoria Dombrowski Lloyd  
Sister Angela M. Mastrangelo, IHM  
'95 M.A.  
Margery Molnar McCormack  
Kathleen VanHorn Naughton  
Michele Otter Ortiz  
Rosemary Casey Peterson, M.D.  
Carol Plater Restifo  
Joan Skedzielewski Ryan  
Marie Scandone  
Regina Finocchiaro Scheerer  
Margaret McGlone Scichili  
Karen A. DeVries Smith  
Virginia Q. Quinlan Stach  
Carol Murray Theriault  
Susan Jezsik Varlamoff

#### **CLASS OF 1972 | PARTICIPATION: 42%**

Joann Guicheteau Alba  
Patricia Hearing Backer  
Patricia A. Bomba, M.D.  
Dana McBride Breslin, Esq.  
Susan M. Petrarca Cifa  
Valarie Collins Costanzo  
Anita Marchei Cunningham  
Anita Maginn Dahlquist  
Mary McQuillen DeCaro  
Patricia Fanning Donnelly  
Sue Ann Taber Duffy  
Kathleen Costello Eng  
Stephanie Slawinski Erdman  
Marianne Koob Finnegan '92 M.A.  
Maureen Neylon Fox  
Jacqueline Sergi Gallombardo  
Mary Ellen Winarski Gerlach  
Nancy Drozynski Grant

Frances Ninnis Hendrick, M.A.  
Sister Mary Henrich, IHM  
Katherine Jespersen Hill  
Patricia Sullivan Holthaus  
Geraldine Coletta Ivy  
Patricia Love Johnson  
Diane Hoebich Keane  
Mary Kay Heim Kennedy  
Sheila O'Brien Kennedy  
Margaret M. Knox-Lee  
Sheila Konczewski  
Valerie-Anna Koukos Langmayer  
Jeanne Weingartner Lapsa  
Linda Lavin Leska, M.D.  
Barbara A. Lettiere, M.A., M.B.A.  
Laura Nelowet Litka  
Rosemary Cody Loring, JD  
Nancy Engle Lynch  
Anne Marie Holland Marshall  
Marge Hutchinson McElroy  
Barbara A. Majewski McHale  
Sheila M. Meehan  
Mary Lou Youngkin Meyer  
Genevieve R. Owens Miceli  
Mary Anne Bates Mills  
Suzanne M. Huck Neubauer, Ph.D.  
Margaret Niven  
Susan M. Forsyth O'Grady  
Mary Coyne O'Shea  
Rosalie Rogiewicz Parks  
Rosemarie Messina Quaranta  
Linda Miller Raffa  
Deirdre Daly Righter  
Mary Jane Walters Ryan  
Eileen Jasienski Schiappa  
Barbara Burns Shaw

Eileen Miller Simzak  
Ana Giebel Sisson  
Anne M. Tyrrell  
Patricia A. Spada Vizza  
Susan Brons Wagner  
Carolyn S. Thomas Walker  
Mary Carol Landis Wescott  
Leslie Wohlbruck  
Magdalen Hon Wu

#### **CLASS OF 1973 | PARTICIPATION: 24%**

Margaret M. Hoepf Apice  
Margaret Ann Bradley  
Anne Marie Capista Caggiano  
Nancy T. Caldarola, Ph.D.  
Geraldine M. Breslin Callahan  
Lucille A. Grabowski Cantwell  
Eileen Monahan Chopnick  
Eileen Hunt Correll  
Patricia Forster Cunningham  
Kathleen A. Costigan DeHaut  
Mary Jo Delaney  
Margaret M. O'Donnell Donohue  
Susan E. Duffy  
Rosemary Sherlock Graf  
Kathleen Hughes  
Marylee Siano Johnson  
Rosemarie Marcaccio Joseph  
Pamela Hickey Leiby  
Mickey Venditti Losch  
Michelle Ventura Mallozzi  
Maria Ann Michalik Midas  
Helen Deegan Murphy, Esq.  
JoAnn M. Paslawsky  
Elizabeth Hoffman Quinn  
Ruth L. Rizzo, M.D.  
Marie G. Rosenberg  
Moiria A. Frost Tamburello  
Mary Dombrowski Vandergrift  
Maria V. Veron  
Jacqueline Koller Weber  
Mary S. Weeks

#### **CLASS OF 1974 | PARTICIPATION: 22%**

Elizabeth M. Ackroyd  
Patricia Simpson Arata  
Elizabeth Cass-Schmidt  
Ann Pyzik Colduvel  
Patricia Coletti  
Denise M. Conway Crawford  
Karen D'Agusto, Esq.  
Janet Young Eline  
Mollie Lichty Fahnestock  
Christine Decker Feidler  
Karen Magda Fein  
Cynthia Gabrielli, D.O.  
Margaret M. Gill  
Deirdre Maloney Giordano

Kathleen James  
Cecelia Maher  
Mary Anne Roddy Malone  
Theresa Marinelli Matthews  
Elaine Eckenroth Mayat  
Melissa Delmonico McGinnis  
Kathleen H. McKee '81 B.S., Ph.D.  
Mary Ellen Mulhern  
Sister Catherine Ann Nally, IHM  
Marilyn Jeanne Nigro  
Margot Ann O'Neill  
Veronica M. O'Donnell Phillips  
Dolores Nancy Potts '05 M.A.  
Vitina Bucca Symanski

#### **CLASS OF 1975 | PARTICIPATION: 23%**

Carol Vasko Bonnet  
Dolores Loudon Burke  
Carol Clark-Hutelmeyer  
Therese M. Connell †  
Maria A. DiBenedetto  
Ann Marie McErlain DiMarco  
Maureen T. McCreary Eckenroth  
Jacqueline Goelz Emrich, Ph.D.  
Roseanne Tramo Gale  
Graciela H. Hopkins  
Mary McCoy Hudzinski  
Barbara Keane  
Ann Herd Klein  
Judy Marra Martelli  
Joan Kane McCarthy  
Maureen H. McCullough, J.D.  
Mary Patricia Bakey McGowan  
Susan Minicus Miller, Ph.D.  
Kathleen Boylan Muldoon  
Barbara Mulgrew  
Kathleen Costello Murphy  
Mary Jane Turner O'Rourke  
Edith M. Petillo  
Estate of Pamela D. Ransome †  
Cecilia Gross Rose  
Karha Us  
Elizabeth Croke Venditta  
Kathleen Killion Wojcik  
Marianne DiCecco Zollers

#### **CLASS OF 1976 | PARTICIPATION: 27%**

Anna Jurick Alton '93 M.A.  
Suzanne Babyar-Rothbart, Ph.D.  
Margaret Szaro Bierbaum  
Kathleen A. Bonner  
Daniella M. Bradley  
Marian Gross Cain  
Michele Modesto Caldwell  
Renee Tomasso Esposito  
Mary E. Gillane  
Mary V. Hooten Green  
Kathleen Gallagher Healey



**Pictured:** The Maxis Society Reception

Estate of Mary E. Jacquette, M.D. †  
Regina Grugan Kozul  
Sandra Dwyer Maas  
Barbara Zaber Mancini  
Nina M. Mulrooney  
Sheila Teresa Craig Peregrin  
Anne Regina  
Elizabeth Pizzo Richards  
Marianne Stanley

**CLASS OF 1977 | PARTICIPATION: 19%**

Anonymous (1)  
Patricia K. Abbott  
Francine Messina Allan  
Crelia Anoa  
Sharon M. Robitaille Connell  
Sister Carol Anne Couchara, IHM, Ed.D.  
Diane C. Gryger  
Sister Ann Heath, IHM, Ph.D.  
Maureen Donohue Johnson  
Barbara Deuble Kelly  
Ruth Duffy Krywicki, Ph.D.  
Mary Amadio Lewcun  
Christine M. Suchnick Lis  
Patricia Mulhern Loughran  
Sister Patricia A. Mengel, IHM '95 M.A.  
Dorothea Magowan Richardson  
Lynn Nicoletti Sharkey  
Maureen T. O'Hara Stover  
Marie L. Liguori Williams, D.P.M.

**CLASS OF 1978 | PARTICIPATION: 9%**

Rebecca A. Walters Buskirk  
Margaret Erickson-Menton

Janet Maginn Garrity  
Kathleen Costello Malin  
Sister Lorraine McGrew, IHM  
Veronica McLaren  
Maria de los Angeles Morales

**CLASS OF 1979 | PARTICIPATION: 17%**

Suzanne Anderson  
Patricia A. Welsh Balko  
Patricia Ann Cerchio  
Felicia Puma Dinkel  
Anne Marie Dolan Eanes  
Cindy Mark Egnotovich  
Mary Beth Guyette  
Karen Squire Hagan, M.D.  
Mary Bridget Kane  
Maureen O'Neil Kehoe  
Bernadette S. McLaughlin Louden  
Margaret Mannion  
Carol McCadden Mayer  
Susan Antonelli Morris, Esq.  
Pamela M. Besser Stofberg  
Mary Johnson Switkay  
Sister Catherine M. Ward, IHM '99 M.A.  
John P. Wickman

**CLASS OF 1980 | PARTICIPATION: 12%**

Sharon Barrett  
Eileen Marie Ross Boyle  
Virginia Feller Brosius  
Anna May Clark  
Carolyn Fagan  
Mary Lou Batchelder Fetchko  
Mary Erickson Gorski

Clare Jameson  
Karen Licorish Keane, D.O.  
Janice Gardler Mattera  
Mary Ann Raymond  
Joanne Korpanty Solecki

**CLASS OF 1981 | PARTICIPATION: 12%**

Peggy Ann Behm  
Eileen T. Coxson  
Mary Jo Tietjen Cree  
Moya Kaporch Dittmeier, Ed.D.  
Teresa Ann Newsom Gresko  
Bernadette Paul  
Sandra Porter  
Roberta Regetta  
Boreta A. Singleton  
Susan Cipollini Skahan  
Anne Yarrow Walters  
Deborah Louise Wright

**CLASS OF 1982 | PARTICIPATION: 22%**

Ruth Bradley Arata  
Mary Carole Barringer  
Nancy McDermott Beatty  
Kathleen M. Behm-Ford  
Anna M. Giannattasio Clancy  
Lisa Coroniti  
Monique Adams Coval  
Leslie Ann Culp  
Helen Cassidy Dannecker  
Joseph P. Darlington, Jr.  
Sister Paula Regina Jameson, IHM, Ph.D.  
Mary Elizabeth Jones, Ph.D.  
Jean Madden  
Rita Wojton Mandik  
Margaret M. Murphy  
Miriam C. O'Malley, D.D.S., D.M.D.  
Joan M. Reilly-Rosa  
Gloria Martino Satriale, J.D.  
Paula Mroz Scarfo  
Anna Marie Schneider  
Patricia Smalley Scirroto  
Betty Ann Kempf Townsley

**CLASS OF 1983 | PARTICIPATION: 17%**

Jean M. Grogan Blaisse  
Denise Acker Foedinger  
Anne M. Gellrich  
Julia A. Fogarty Hahn  
Diana Rose Hoffman  
Sarah L. McKay Imperato  
Patricia Duffy Juliano  
Dreda Marie Kelley  
Valerie Dondero Mahfood, Esq.  
Karen DeLucia Matweychuk  
Karen Filbey Nocella  
Laureen J. Gallagher Plasha  
Tara Mary Quinn

Dora Santarelli  
Maria Ann Cicippio Smeykal  
Barbara Williams Willis  
Julianne Kleponis Yarwood

**CLASS OF 1984 | PARTICIPATION: 12%**

Constance Napaluch Davies  
Patricia A. Carroll Gorman  
Beth Anne Hoffman Hansel  
Jane E. Hautanen  
Regina Parisien Jean-Claude  
Heather B. Koelle  
Jo Anne McAdams '87 M.A., '96 Ed.D.  
Virginia Neumer  
JoAnne L. McAdams Osborn  
Maria C. Giorgi Panella  
Maryann Perna  
Denise Charette Rentschler  
Barbara A. Brinton Richards  
Constance Barch Ripper  
Rebecca T. Velde  
Mary N. Walker  
Theresa C. Warrell, Ed.D.

**CLASS OF 1985 | PARTICIPATION: 11%**

Milagros Arana  
Patricia M. Bradbury  
Norma C. Hall Brown  
Annemarie Timlin Burke  
Denise M. Janssen Davidson  
Patricia Buscaglia Flynn  
Maribeth Foster  
Mary Jane Gimpel  
Holly Jean Schmuker Mullan  
Lisa Ann Stephenson Skinner  
Marianne C. Muller Thiemann  
Dolores E. Wiercinski

**CLASS OF 1986 | PARTICIPATION: 13%**

Mary Beth Czaus Bimmerle  
Bernadette DeLorenzo Burns  
Kathleen McKernan Canum  
Marya C. DiTaddeo Dempsey  
Carolyn Johnson DiFilippo  
Denise Eileen Dowd  
Heidi M. Atkinson Elich  
Joanne Fillicko-O'Hara, M.D.  
Joanne Giannantonio  
Kara J. Lutz Haggerty '12 M.A.  
Jennifer Cullinan Lewis  
Joan E. Liebold Oliver  
Maria A. Terry Remley  
Annette Rineer-Tighe M.A.  
Sharon Ann Smith

**CLASS OF 1987 | PARTICIPATION: 15%**

Carol A. Bradley M.A.  
Mary Theresa Brown M.A.  
Deneen Caromano Celommi

Report includes gifts from 7/1/21 to 6/30/22. Every effort has been made to ensure accuracy. We apologize for any errors or omissions made in donor listings. † Indicates deceased



Anita D. D'Alessandro Ciampi  
 Carol Colker  
 Charles Coxson  
 Karen Lynne Parke D'Eramo  
 Judith Graham Jester Durante  
 Rosalie Hieronimus Gross  
 Sara D. Harris  
 Joyce Hiemenz  
 Judith A. Hoffman  
 Izaira M. Mansur  
 Karla Seiger McCaney  
 Kathy Taglianetti McCrea  
 Mary I. McDonald  
 Catherine M. Pipan, M.D.  
 Kathleen O'Connell Smith  
 Yvonne Smith  
 Nelcy B. Paz Valcourt  
 Susan Coffey Zern, M.D.

**CLASS OF 1988 | PARTICIPATION: 9%**

Gail Kent Clemmer M.A.  
 Maureen Dupras Curry  
 Stephanie Wham D'Amico  
 Karen M. Flanagan  
 Nora P. Gammon  
 Daisy Grueso  
 Maryanne E. Hartman-Cunningham  
 M.A., '90 M.A.  
 Kathleen M. Hayes Lennon  
 Kathleen Martin M.A.  
 Maria Castaldi McLaughlin  
 M. Noelle Meltsch  
 Tanya M. Amoss Momtahan  
 April A. Nevis  
 Kathleen Crow Riley  
 Mary Beth McGrath Westmoreland

**CLASS OF 1989 | PARTICIPATION: 9%**

Anne Donnellan Brown  
 Patricia Brunner  
 Mary Cullinan Coakley M.A.  
 Linda Stankus DeSantis '12 M.A.  
 Alisa Devlin, M.D.  
 Karen Ruth Finley  
 Bernadette A. Flaherty  
 Janine Hoffman, Esq.  
 Lisa G. Carlino McDonald  
 Margaret Mary McHugh  
 Maribeth V. Wanzie Mrozek  
 Theresa Major Payton  
 Karen Ritchey  
 James W. Supplee M.A., '03 Psy.D.  
 Carolyn Desiderio Thompson  
 Jennifer A. Yorke

**CLASS OF 1990 | PARTICIPATION: 10%**

Maureen E. Heffernan Clark  
 Lauren Sullivan Cook

Yolanda Cooper  
 Elizabeth Gotshall Faunce, Ph.D.  
 Kelly Lynn Ford  
 Kelly Kilpatrick Glaum  
 Susan T. Kane Hally  
 Ann Matusiak Johann  
 Tracey P. Putrino Jones  
 Amy Pontzer Jones  
 Jacqueline Dunleavy Longo  
 Mary Ann Malinyak-Burcin  
 James K. Pitt  
 Maureen Matthews Scott  
 Jean Wagoner Shingle, Ph.D.  
 Krista Ann Weisser Showers  
 Kathleen Freney Smith  
 Suzanne Taft Sheppard  
 Dina L. Ziemba

**CLASS OF 1991 | PARTICIPATION: 11%**

Kathleen Ambrose  
 Danica Johnson Campanale  
 Aileen M. Devine Campbell  
 Christy Saddic Cosgrove  
 Frances Crowe-Morris  
 Mary E. Kean Dougherty  
 Eleanor A. Fogarty  
 Nicole Marie Lacoste Folks  
 Cecelia M. Trimber Gilliam  
 Kimberly Kulp Hanks  
 Elizabeth A. Sullivan Iannelli  
 Christine Bloesch Juliano  
 Marie Markwardt Kane '97 M.A.  
 Patricia Ann Knecht, Ph.D.  
 Amy Markey Lanasa

Kristy A. Rupp Legenstein  
 Cynthia E. Lennon  
 Abby Smith Low  
 Kelly Ann Philbin '07 M.A., Ph.D.  
 Lisa Jones Rincker  
 Pamela A. Frantz Sisolak  
 Lori Heffelfinger Spoor  
 Carol E. Sweeney M.A.  
 Patricia C. Washburn M.A.

**CLASS OF 1992 | PARTICIPATION: 10%**

Brian G. Becker  
 Stacey Ann Motznik Bibbo  
 Patricia Canterino '12 M.A.  
 Barbara Inman Dobzanski  
 Sharon Dula-Henik  
 Carmen Florez-Mansi  
 Cristina Pasa Gibson  
 Anna May Beecher Greer  
 Elaine Galinis Honig  
 Janet Pettit Kershner  
 Maureen Boyle Gearing Landosky  
 Helen Patricia Masino  
 Sharon M. Colasanto Matteo  
 Kristin McGuire  
 Francis Xavier Milles M.A.  
 Eunice Timoney Ravenna  
 Amy Spiezio  
 Jennifer Foltz Walters

**CLASS OF 1993 | PARTICIPATION: 3%**

Linda L. Francis Burke, M.A.  
 Deborah A. Hutter Goss, M.D.  
 Dorothy Hutter Lobo, Ph.D.

Sandra E. Slater †  
 Carol A. Pino Sprang M.A.  
 Sandra Dorazio Young M.A.

**CLASS OF 1994 | PARTICIPATION: 3%**

Claire T. Daniels  
 Allyson Gardner  
 Judith Mack Greeley '14 M.A.  
 Sister Marie Therese Hirsch, IHM, M.A.  
 John Jameson '97 M.A.  
 Darlene Ashton McKee  
 Donna Marie Waters  
 Joanne White M.A.

**CLASS OF 1995 | PARTICIPATION: 4%**

Natalie Fisher M.A.  
 Anne B. Gearing  
 Pamela Henry  
 Mary Elizabeth Hoffman  
 Karen Kaiser-Benecewicz  
 Dianne P. Anthony Manges  
 Joseph F. Reilly M.A.  
 Sister Monica Therese Sicilia, IHM  
 '04 M.A.  
 Celina Marie Siwula '14 M.S.N., '20 Ed.D.  
 Amy L. Zimmerman

**CLASS OF 1996 | PARTICIPATION: 4%**

Heather Lovelette Dotchel  
 Willetta A. Goldstein  
 Bridget A. Haines-Frank  
 Kathleen Schaller Hohenadel  
 Karen M. Kochan M.A.  
 Kathleen A. Martin



*Pictured: Posters Under the Dome presentation*

Report includes gifts from 7/1/21 to 6/30/22. Every effort has been made to ensure accuracy. We apologize for any errors or omissions made in donor listings. † Indicates deceased

OUR GENEROUS DONORS

Beth Ann Mull M.A., '02 Psy.D.  
Sheila Johnson Patterson M.A.  
Paloma A. Santiago-Adorno

**CLASS OF 1997 | PARTICIPATION: 4%**

Anonymous (1)  
Bridgette Dougherty-Williams  
Kathleen B. Fitzpatrick  
Maureen Donahue Fogerty  
Esther M. Houpt M.A.  
Alexis M. Budinas Janusz  
Jennifer A. LaGrassa M.A.  
Jennifer Carpenter Livingston  
Eileen Helm Weaver Ed.D.  
Kathleen H. Hepburn Yanevich

**CLASS OF 1998 | PARTICIPATION: 1%**

Helenann Meenan  
Patricia R. Moore Schools  
Dina M. Stern '12 M.A.

**CLASS OF 1999 | PARTICIPATION: 3%**

Anonymous (1)  
Kathie Estock Ed.D.  
Phyllis Gatta  
Gemma C. Geigert Ed.D.  
Christine A. Giardini M.A.  
Susan Lee Trach Gonya M.A.  
Regina Gordon Ed.D.  
Virginia E. Guyer  
Nicole Bertolini Martin  
William J. McCusker Ed.D.  
Alma Seidel '01 M.A.

**CLASS OF 2000 | PARTICIPATION: 2%**

Melissa Smola George, D.O.  
Karen Kropp  
Ann F. Kunsch  
Maria Stofanakova McCarthy

Mary Ann Saenz  
Phyllis R. Simmons Ed.D.  
Joseph M. Waters Ed.D.  
LeeAnn Zereth Ed.D.

**CLASS OF 2001 | PARTICIPATION: 2%**

Anonymous (2)  
Cathleen Novak Addison  
Tina Floyd  
Judy A. Franco  
Elizabeth E. Ginty  
Lisa Kamp  
Mary A. O'Brien  
Sandra J. Ruth  
Elizabeth Shepherd M.A., '06 Psy.D.

**CLASS OF 2002 | PARTICIPATION: 5%**

Christine Baer  
Cynthia Klementowich Broomall  
Kathryn M. Campbell  
MaryKay Christ  
Maria Marzen Collins  
Amanda Freeman Costanzo  
Lisa A. Dougherty, Esq.  
Robyne M. Eisenhauer  
Christine Elias  
Tracey Dwyer Fox  
Bobbi Steltz Gonzalez  
Maria Lazorik Haber  
Bernadette Lawrence Jayakumar  
Maribeth Johns  
Roger J. Jones  
Edele R. Kloss-Deweese '07 M.A.  
Marie A. Lentz '14 M.A.  
Michelle Sundy Loomis  
Steady Moono Ed.D.  
Lauren E. Holst Neuber '03 M.A.  
M. Sidney Pinnie M.A.  
Crystal Potter

Desiree Riccardelli  
April Barra Scepaniski  
Marilyn Manak Sheils  
Laura Madle Singh '04 M.A.  
Sarah Rhodenbaugh Stong  
Kathleen M. Theilacker '07 M.A.  
Shirley Yuzwiak

**CLASS OF 2003 | PARTICIPATION: 2%**

Anonymous (1)  
Dennis H. Bartow Ed.D.  
David W. Brennan Ed.D.  
Cynthia Calla Christenson Psy.D.  
Theresa Connelly  
Jennifer Pepersack Corbin  
Salvatore DiNenna Ed.D.  
Suzanne Trotter McKeever M.A.  
Lisa Witulski

**CLASS OF 2004 | PARTICIPATION: 2%**

Sister Margaret Rose Adams, IHM M.A.  
Theresa M. Bell  
Susan W. Dennen M.A.  
Kelly Ann Doyle Ed.D.  
Russell C. Heasley  
Amanda Cook Hershey  
Joanne A. McKee  
Whitney Deeney Pfeffer, Esq.  
Patricia Poserina '08 M.S.N.  
Elizabeth Brothers Sillman M.A.  
Maryanne Smart M.A.

**CLASS OF 2005 | PARTICIPATION: 2%**

Mary Louise Borgmann  
Donna Brown-Torres  
John E. Dowling M.A., '20 Ed.D.  
Jessica Bunsick Downing  
Lori L. De Rea Kolb '09 M.A.  
Melissa Lee M.A.

Lesley Maurer  
Eileen M. Senior Psy.D.  
Claire Coleman Sheridan, Ph.D.  
Amy Pryce Totin

**CLASS OF 2006 | PARTICIPATION: 3%**

Stephen D. Deihl  
Dorothea Greto  
Heather J. Gwin  
Janette M. McFetridge '10 M.S.N.  
Douglas K. Mountz Ed.D.  
Justina D. Pedante Ed.D.  
Sandra Rollison M.A.  
Elizabeth O'Leary Schreffler  
Starr D. Stanley  
Marcel Tabone Psy.D.  
Theresa M. Weidenbaugh Ed.D.  
Sarah R. Wolfe '10 M.A.

**CLASS OF 2007 | PARTICIPATION: 3%**

Jeannette L. Barr  
David M. Campbell  
Gwen Menton Cantarera  
Thomas C. Castner Ed.D.  
Susan M. Hagar Cox Psy.D.  
Robyn Heitzman Gotro  
Mark A. Kadel M.A.  
Katherine Rose Keenan  
Rebecca Kimmel  
Conal McBride  
Deborah J. Snavely  
Suzanne C. Steczak  
Tracy Pautz Wolfe  
Jeannine Zack

**CLASS OF 2008 | PARTICIPATION: 1%**

Nancy A. Berry M.S.N.  
Sara M. Pletcher Bluhm  
Maria Elena Capaldi



**Pictured:** Education Alumni Reception

Report includes gifts from 7/1/21 to 6/30/22. Every effort has been made to ensure accuracy. We apologize for any errors or omissions made in donor listings. † Indicates deceased



Frank L. Garritano Ed.D.  
Elizabeth S. Gladulich  
Latoya C. Johnson  
Marianne Demko Lange  
George E. Shelton

**CLASS OF 2009 | PARTICIPATION: 2%**

Lea H. Barone  
G. Scott Cornell  
Mary Dorsch  
Lorraine F. Entrikin  
Patrick Frevert  
Kristina L. Pengler Goetz  
Alexander Hughes-Taylor  
Ronald B. Jones  
Barbara J. Kincade  
James Malinowski  
Susan H. Morris  
Alice Marie Quirk  
Melissa Hopely Rice  
Jeffrey D. Rollison Ed.D.  
Angelina Sabatini  
Lydia S. Szyjka M.A.

**CLASS OF 2010 | PARTICIPATION: 1%**

Elyse M. Altieri  
Maryann T. Cox Ed.D.  
James A. DiFerdinand M.A.  
Crystal Woessner DiGiacomo  
Sonia Sparkes Gasko  
Mary Frances Keating '20 M.S.N.  
Paul Robert McAndrew '15 M.A.  
Tracy M. Morrison  
Laura Pedersen  
Michael Ventola  
David P. Wuestner Ed.D.

**CLASS OF 2011 | PARTICIPATION: 1%**

Julia C. Inslee, M.A.  
Craig L. Parkinson Ed.D.  
Elizabeth M. Strauch  
Thomas R. Swink  
Cristina M. Tansey, M.S.N., '21 Ed.D.

**CLASS OF 2012 | PARTICIPATION: 2%**

Rev. Kyle M. Adamczyk  
Debra Lynn Beam  
Leslie A. Bokoski  
Georgann Cindrich  
Justin M. Cusick  
Jeanne M. Dagna Ed.D.  
Melissa R. Francis  
Katie J. Giltinan  
Maureen Liszewski  
Chantal G. Medina  
Kevin W. Moore  
Demetrios Vlahos  
Elizabeth Ann Weber Ed.D.  
Darien Zimmerman

**CLASS OF 2013 | PARTICIPATION: 1%**

Edward A. Bettler, Jr.  
Richard K. Girkin  
Daniel R. Klodarska  
David Joseph Renaut Ed.D.  
Christine Esbensen Rhine '18 M.S.  
Kelly A. Woodward  
Meiru Zhao

**CLASS OF 2014 | PARTICIPATION: 0.2%**

Daniel Joseph Burns  
Melanie E. Dudley

**CLASS OF 2015 | PARTICIPATION: 1%**

Carol C. Kelsall Ed.D.  
Owen Daniel Logue '19 M.S.  
Allison N. Olock  
Marcia A. Parris Ed.D.  
Loretta Pigeon  
Sallie Ann Tuscai  
Nicholas W. Yelovich

**CLASS OF 2016 | PARTICIPATION: 1%**

Nancy B. Barker Ed.D.  
Kpehe Carter  
Karly B. Giltinan  
Mark J. McFadden Ed.D.

**CLASS OF 2017 | PARTICIPATION: 2%**

Dominic James Antenucci  
Gina Ayers  
Alisha M. Baldino  
Erin A. Beatty  
Stephanie DeSimone Corbin Ed.D.  
Anne Marie DeCarolis  
Christine Adrienne Haines  
Ashley Cassandra Kahn  
Laurence S. Messler  
Katelyn Grace Starr '21 M.A.  
Megan Johanna Wheeler

**CLASS OF 2018 | PARTICIPATION: 1%**

Michelle A. Billy  
Kelly Gross  
Kaileigh Ann Kita  
Lynda Michaels Ed.D.

**CLASS OF 2019 | PARTICIPATION: 1%**

Jonathan Bittner  
Sydney Lauren Dixon  
Vivian G. McAllister  
Morgan E. McDonough  
Charles Williams M.S.N.

**CLASS OF 2020 | PARTICIPATION: 1%**

Clinton James Bradley  
Catherine L. Campbell  
Kathryn M. Quinn  
Sophie J. Walker

**CLASS OF 2021 | PARTICIPATION: 1%**

Dane Steven Aucker Ed.D.  
Theresa Tyus Mitchell  
Verity Saba  
Anna Marie Georgina Waller

**CLASS OF 2022 | PARTICIPATION: 4%**

Meghan E. Bakey  
Tara L. Battaglia, Ed.D.  
Jennifer Evans, M.S.  
Jennifer P. Grubb  
Gabrielle M. John  
Francesca A. Kalie  
Laura R. Markofski  
Jessica Maziarz  
Olive O. Monye  
Elizabeth Munz  
Margaret M. Murtha  
Cristina L. O'Brien  
Sean K. Rowe

**STUDENTS**

Garrett L. Pepper  
Jessica Migrala

**MEMORIAL GIFTS**

The following donors in italics made gifts in memory of those whose names appear in bold during the 2021–2022 fiscal year.

**Dr. Gunther Abraham**

*Kenneth B. Tenley*

**Sister Trinita Marie Amorosi, IHM**

*Jean Roney Yoder '60*

**Joanne M. Shovlin Annas '49**

*David B. Bucher  
Barbara A. Cahill  
Bridget K. Crooks  
Susan Daroff  
Nancy B. Dougherty  
Great Valley Women's Club  
Maria Holland  
Patricia H. Imbesi  
Margaret M. Layden  
Diane M. Malnak  
Rose Mary Mazur  
Meridian Bank  
Joseph Rava  
Michael Tiagwad  
Utracras, LLC  
John Zabinski*

**Mary Frances Heaney Backe '54**

*Mary Sheehan Leahy '54  
David Mingey*

**Bryan Beam**

*Jeanne S. Bortulin*

**David Beideman**

*Vivian Leigh Beideman  
Nave Newell, Inc.*

**Thomas J. Belmont**

*Patricia Belmont*

**Catherine Parker Boland**

*Susan Sackett Kratzinger '68*

**Patricia Chandler Bonafair '66**

*Nancy Satterfield*

**Andrew J. Brunner**

*Patricia Brunner '89*

**Sister Marie Lorraine Bruno, IHM '51**

*Margaret Erickson-Menton '78  
Mary Anne Bensinger Gearing '63  
Antoinette Iaquinto Makowski '60*

**Kathleen F. Burke '79**

*Margaret Mary Mannion '79*

**Aloysius Burns and Maire Burns**

*Mary Anne Burns Duffy '67*

**Sister Mary Consuela Callaghan, IHM**

*Anne McDonald DePrince '67  
Kathryn Speaker MacNett '70, Esq.*

**Rev. William E. Campbell**

*Patricia Carey Cochran '62  
Anne Marie McDonnell Corwell '67*

**William A. Carson**

*Susan Schultz*

**Barbara VanHorn Colsey '56**

*Kathleen VanHorn Naughton '71*

**Kathleen Marie Cooper**

*James E. Cooper  
James S. Cooper '22*

**Joel Cipriani Curran '64**

*Barbara Ann Morris Casale '64  
Thomas A. Curran*

**Bernadette Naughton DeArmond '66, M.D.**

*Cynthia Soffel Clark '66  
Kathleen VanHorn Naughton '71*

**Sister Regina Mauricia DeFeo, IHM**

*Sister Virginia Assumpta McNabb, IHM*

**Thomas P. DeLucia**

*Jeanne S. Bortulin  
Edward F. Dudley and Georgia Dudley  
Karen DeLucia Matweychuk '83*



**Gabrielle M. Iorio Devine '48**

Joanne C. Devine

**Eileen Lee Dietrich '49**

Stephen Erdman

**Patricia Loughlin Dolgert '68**

Margaret Anne Stein '68

**Alberta F. Donlan '60**

Anita Williamson Siegenthaler '60

**Bernadette Dooley '69**

Kathryn Hoover Alexander '69

**Almira M. Douth**

Sister Marjorie M. McCall, IHM

**Mary Dugan, Ph.D.**

Melissa Smola George '00, D.O.  
Joseph D. Smola and Melanie Smola

**Sister Loretta Mary Enderle, IHM**

James Jacobs and Joanne Jacobs  
Catherine Luongo Kraus '70

**Marie Fahy**

Barbara M. Fahy '63, Ph.D.

**Mary Dempsey Flanagan '39**

William J. Flanagan

**Sister Regina Foy, IHM**

Kelly Ann Philbin '91, '07 M.A.  
Alice Marie Quirk '09

**Madeline Cicione Gardner '58**

Francis J. Gardner

**Albert Gelb, M.D.**

Susan Schultz

**Helmut Gellrich**

Anne M. Gellrich '83

**Sister Jean Anthony Gileno, IHM**

Amy L. Zimmerman '95

**Joseph Gross and Elizabeth Gross**

Marian Gross Cain '76

**Sister Claudine Hagerty, IHM '51**

Mary Anne Bensinger Gearing '63  
Doreen Heath  
Jean Roney Yoder '60

**Mary Frances Healey Hartdorn '79**

Patricia Ann Cerchio '79  
Anne Marie Dolan Eanes '79

**Melissa Heasley**

Russell C. Heasley '04

**Sister Marian William Hoben, IHM '55, Ph.D.**

Margaret Anne Collins '65  
Anne Marie Dolan Eanes '79  
Gerard A. Goulet  
Anne Marie Phillips Martin '67

**Mary Ellen Jacqueline '76, M.D.**

Elizabeth Shepherd '01 M.A., '06 Psy.D.

**Ann Louise Morris Gallagher Juló '44**

Patricia A. Gallagher

**Martin Jurick**

Anna Jurick Alton '76, '93 M.A.

**Rose Kalogredis**

Susan Schultz

**Dorothy Walsh Kelly '49**

Anne Marie Kelly

**Sister Eugenie Kennedy, IHM**

Kathleen B. Fitzpatrick '97

**Kitty and Jeanette**

Kathryn Callinan Simpson '56

**Sister Marie Albert Kunberger, IHM '51**

Donna Marie Waters '90 A.S., '94 B.A.

**Edwina Wright Lane '68**

Roberta Wright Verostick '67

**Eileen Barbour Leardi '65**

Robert Leardi, M.D.

**Isabel Flannery Leonard '43**

Izanne Leonard-Haak '70

**Stephanie Lapiga Lightner '70**

Kathryn Mendelsohn

**Eileen Cahill Lynch '55**

Edward Bonett  
Wendy W. Hibberd  
R. Terence Lynch  
Sonia M. Melville  
Jude D. O'Shea

**Joseph C. Maginn and**

**Dorothy Griesser Maginn '43**

Janet Maginn Garrity '78

**Martha Maxwell**

Susan Schultz

**Sister Maureen Lawrence McDermott, IHM '78**

Janet Maginn Garrity '78  
Patrice A. Haines  
Kathleen Costello Malin '78  
Maureen H. McCullough '75, J.D.

**Sister Mary of Lourdes McDevitt, IHM**

Margaret C. Rademaker Bielen '58  
Margaret Kennedy Wagner '55  
Margaret Monahan Hogan '63, Ph.D.

**Ellen Meisner McDonnell '60**

Jean Roney Yoder '60

**Thomas McGuinness**

Marliss McGuinness

**Rev. Joseph A. McTigue**

Patricia Carey Cochran '62

**Susan A. Meehan '68**

William Meehan

**Patricia Ann Kearney Miamidian '62**

Leon R. Miamidian

**Linda Fredericks Michelson '66**

Gary Michelson

**John Sebastian Bomba Mikulsky, Esq.**

Patricia A. Bomba '72, M.D.

**Ann Mitchell**

Susan Schultz

**Sister Mary Charles Monaghan, IHM**

Anne Marie McDonnell Corwell '67

**Francis E. Monaghan, Jr.**

Kathleen Daley McKinley '69, Ph.D.

**James J. Mooney**

Starr D. Stanley

**Ann M. Keefe Morgan '68**

Margaret Anne Stein '68

**Eleanor Kemper Ryan O'Brien '54**

Jane C. Bellisfield  
Ronald Juwa  
Denise Quinn Kossuth  
Rita G. Kovacs  
Edward Nelson  
Andrew Quinn  
Carroll Quinn  
Thomas Quinn  
Bertrand Rottkamp  
John Yetsko

**Sister M. Rita O'Leary, IHM**

Margaret Erickson-Menton '78  
Eleanor A. Fogarty '91  
Mary M. Wehrmann  
Julianne Kleponis Yarwood '83

**Florence Krupp Pahides '71**

Susan Schultz

**Stephen F. Payer and Elizabeth C. Payer**

Elizabeth T. Payer-Pedone '69

**Brian Andrew Petersen '11, '13 M.A., Ph.D.**

Lou Ann Atkinson  
Nicole Clauser  
Anne Marie DeCarolís '17  
Andrea Devoti  
Jeannette Driscoll  
Tina Floyd '01  
Brendan Gibbons  
Brittany Irwin  
Diane Lieser  
Todd Little  
Linda Martens  
Katie C. Newell  
Marcia A. Parris '15 Ed.D.  
Brad Petersen  
Craig Petersen

Report includes gifts from 7/1/21 to 6/30/22. Every effort has been made to ensure accuracy. We apologize for any errors or omissions made in donor listings. † Indicates deceased



John Petersen  
Virginia Petersen  
Donna C. Pierce  
Rebecca Ramos  
Janet L. Ross  
Samantha Santee  
Mary Jane Schultz  
Janet Sette Bloom  
Marilyn Manak Sheils '02  
Dina M. Stern '98, '12 M.A.  
Mary Ann Stewart  
Megan Stumpf

**Sister Cecile Marie Phelan, IHM '50**  
Amy L. Zimmerman '95

**Robert Allen Potter '17**  
Mary Alice Hinerman

**Carl R. Pratt, Jr., Ph.D.**  
Albright College, Finance Division  
Rita M. Graczyk  
Maria Gregorio  
Beth K. Liss  
Rebecca Martin  
Jack Miller  
Andrew Valenci

**Charleen Hennessy Punk '50**  
John W. Punk

**Theresa L. Quattrone '70**  
Loreta Chirico Perthes '70

**Philip Regina and Florence Regina**  
Anne Regina '76

**Paul Reiter**  
Patricia J. Ebersole Reiter '65

**Lillian Strohle Riley '56**  
Carl C. Riley

**Thomas Rosser**  
Susan Sackett Kratzinger '68

**Colleen Marie Ryan '80**  
Mary Erickson Gorski '80

**Augustin Salerno and Fjoia Salerno**  
Rose Ann Salerno Carr '71

**Mary Ann Scheuhing '68, Ph.D., J.D.**  
Mary Noel Wendel '68

**Louise DiPietro Schleeweis '67**  
Maria Giorgi Panella '84

**Denise A. Kozikowski Simon '91, Ph.D.**  
Nicole Marie Lacoste Folks '91

**Johanna Cirino Sisca**  
Sara M. Pletcher Bluhm '08

**Roxanna H. Smith**  
Phyllis R. Simmons '00 Ed.D.

**George Stoerlein**  
Antoinette Stoerlein Delaney '59, Ph.D.

**Cheryl J. Thatcher**  
James J. Thatcher

**Susan Gail Tolbert**  
Rebecca T. Velde '84

**Mary Anne Callan Trimber '60**  
Cecelia M. Trimber Gilliam '91

**Sister Regina Therese Unsinn, IHM**  
Sister Virginia Assumpta McNabb, IHM

**Gloria Zampol Von Ahnen '45**  
Cecelia L. Wade

**Elizabeth F. Wagoner, Ed.D.**  
Holly Adams  
Sharon Pappas Barnes, Ph.D.  
Joan M. Berdich  
Jane Hsiao Tang, Ph.D.  
Stephanie Trinkl, D.N.Sc.

**Cathy Marie Wenderoth '79**  
Felicia Puma Dinkel '79

**Paul A. Wilson, Jr.**  
Susan W. Arnold

**Constance Gadren Wozniak '62**  
Sister Kathleen C. Doult, IHM, D.M.A.

**Catherine O'Connell York '41**  
Mary J. Ferguson Booker '68  
Ellen Ann O'Connell Willemin '48

## HONOR GIFTS

The following donors in italics made gifts in honor of those whose names appear in bold during the 2021–2022 fiscal year.

**50th Celebration of Women's Basketball National Championship Teams**  
Denise M. Conway Crawford '74  
Janet Young Eline '74  
Patricia Ann Mulhern Loughran '77  
Judy Marra Martelli '75  
Susan M. Forsyth O'Grady '72  
Elizabeth Hoffman Quinn '73  
Cathy Rush  
Marianne Crawford Stanley '76  
Marie Liguori Williams '77, D.P.M.  
**Sara M. Pletcher Bluhm '08**  
Marianina Pletcher



*Pictured: The Scholarship Luncheon*

**Sister Marie Roseanne Bonfini, IHM '57**  
Kathleen Mulhern Clark '70

**Patricia Canterino '92, '12 M.A.**  
Eunice Timoney Ravenna '92

**Ashley L. Coleman '22 Ed.D.**  
Barbara Stallman

**Sister Carol Anne Couchara, IHM '77, Ed.D.**  
Salvatore DiNenna '03 Ed.D.

**Ann Stabile DePrisco '13**  
Dr. Paul J. Stabile, Sr.  
and Cheryl A. Stabile

**Sister Kathleen C. Doult, IHM '62, D.M.A.**  
Regina Gordon '99 Ed.D.

**Sister Ann Heath, IHM '77, Ph.D.**  
Michael Neeb

**Sister Agnes Hughes, IHM '65, Ph.D.**  
Marcel Tabone '06 Psy.D.

**Sister Donna Kelley, IHM '92, Psy.D.**  
Charles Pitale

**Eleanor Gualtiere Lashley '65**  
Katherine Lovett

**Marijo New Lucas, Ph.D.**  
Marcel Tabone '06 Psy.D.

**Harold W. Major and Yolanda Major**  
Theresa Major Payton '89

**Gloria Cellucci Martino '56**  
Gloria Martino Satriale '82, J.D.

**Karen DeLucia Matweychuk '83**  
Mary Cullinan Coakley '89 M.A.

**Sister Margaret McDonald, IHM '71**  
Kevin W. Moore '12

**Sister Patricia M. McGrenra, IHM '95 M.A.**  
Barbara Ann Doerr

**Margaret Mary McHugh '89**  
Henry J. McHugh

**Sister Ann Thomas Mullen, IHM**  
Louise Antonucci Pascale '63

**Dianne Majer Mundy '64**  
Robert Mundy

**Sister Jeannine O'Kane, IHM '89 M.A., Ph.D.**  
Marcel Tabone '06 Psy.D.

**Kenneth Taft and Mary Elizabeth McCarthy Taft**  
Suzanne Taft Sheppard '90

**Joshua J. Wiekert, Ph.D.**  
Susan Askey  
Judith Sliker Belkowski, Ph.D.  
Ann Good  
Barbara J. Sliker

**Jed Yalof, Psy.D.**  
James W. Supplee '89 M.A., '03 Psy.D.

## FACULTY AND STAFF

The following faculty, staff and administration of Immaculata University generously supported the University with charitable gifts during the 2021–2022 fiscal year.

Susan W. Arnold  
Sharon Pappas Barnes, Ph.D.

## OUR GENEROUS DONORS

Debra Lynn Beam '12  
Vivian Leigh Beideman  
Leslie A. Bokoski '12  
Mary Kate Boland  
Martha W. Borraccini  
Jeanne Bortulin  
Sister Marie Lorraine Bruno, IHM '51 †  
Sister Anne Marie Burton, IHM '71, Ed.D.  
Sister Monica Joseph Cadden, IHM '70  
Patricia Canterino '92, '12 M.A.  
Sister Carol Anne Couchara, IHM '77, Ed.D.  
Dennis P. Dougherty  
Kelly Ann Doyle '04 Ed.D.  
Elizabeth Gotshall Faunce '90, Ph.D.  
Sharon Flood  
Tina Floyd '01  
Lynn F. Giltinan  
Elizabeth E. Ginty '01  
Sister Ann Heath, IHM '77, Ph.D.  
Sister Mary Henrich, IHM '72  
Sister Paula Regina Jameson, IHM '82, Ph.D.  
Elizabeth Murphy Jekot  
Mary Elizabeth Jones '82, Ph.D.  
Sister Marie Hubert Kealy, IHM '57, Ph.D.  
Sister Susan Kuk, IHM  
Barbara A. Lettiere '72, M.A., M.B.A.  
Patricia Lorenzo  
Angela M. Mastrangelo, IHM '71, '95 M.A.  
Karen DeLucia Matweychuk '83  
Mark J. McFadden '16 Ed.D.  
Sister Denise Mollica, IHM '69  
David Parkyn, Ph.D.  
Marcia A. Parris '15 Ed.D.  
Bobbijo Grillo Pinnelli, Ed.D.  
Kathryn M. Quinn '20

Eileen R. Raffaele  
Christine Esbensen Rhine '13, '18 M.S.  
Jeffrey D. Rollison '09 Ed.D.  
Sandra Rollison '06 M.A.  
Jean Wagoner Shingle '90, Ph.D.  
Sister Monica Therese Sicilia, IHM '95, '04 M.A.  
Celina Marie Siwula '95, '14 M.S.N., '20 Ed.D.  
Kathleen Freney Smith '90  
Dina M. Stern '98, '12 M.A.  
Lydia S. Szyjka '09 M.A.  
Carol B. Tafuro  
Jane Hsiao Tang, Ph.D.  
Cristina M. Tansey '11 M.S.N., '21 Ed.D.  
Angela M. Tekely, Ed.D.  
Sallie Ann Tuscai '15  
Jeannine Zack '07

## FRIENDS GIVING

The following friends of Immaculata University generously supported the University with gifts during the 2021–2022 fiscal year.

Anonymous (3)  
Donald Adams  
Holly Adams  
Lisa Agnew  
Albright College  
Robert N. Anders  
Carol J. Anderson  
Barbara L. Andrews  
Mary Arnold

Susan Askey  
Lou Ann Atkinson  
Karl R. Autenrieth  
Meghan Bakey  
John Bakken  
Terin W. Balko  
Kyle Barger  
Doreen Beaudreau  
Debbie Beck  
Judith S. Belkowski  
Jane C. Bellisfield  
Christine Parsons Bendinelli  
Charles Benedict  
Joan M. Berdich  
Alfred R. Beronio  
Lee Bettenhausen  
Edward Bonett  
Anna Bonner  
Terry Bonner  
Stephanie Brunetti  
David B. Bucher  
Marguerite M. Buck  
Barbara Buehler  
Barbara A. Cahill  
Eileen Carrozzino  
Andrew J. Carter  
Helen V. Carter  
Joseph Caspar  
Barbara Cassidy  
Barry Cavagnaro  
Nicole Clauser  
Gerald Collins  
Robert Collins  
Marie T. Constantine  
Dorothy S. Cook  
Bridget K. Crooks  
Thomas A. Curran

John Cvinar  
Robert Czukoski  
Sheila Dahl  
Michelle Dalicandro  
Susan Daroff  
Grant Davis  
Ron Dawson  
Kelly Day  
Joanne C. Devine  
Lorianne DeVita  
Andrea Devoti  
Nicholas DiMarino  
Stephen Dittmann  
Albert Doering, III  
George J. Doerr  
Ray Dombroski  
Julann Oppasser Donnelly  
Richard L. Dooley  
Nancy B. Dougherty  
Jeannette Driscoll  
Napoleon Elortegui  
Christine Engle  
Stephen Erdman  
Karen Espenshade  
Barbara Falini  
Henry C. Fila  
William J. Flanagan  
Angie Flores  
Elizabeth Forsythe  
Bruce W. Friedman  
Eileen B. Gallagher  
Patricia A. Gallagher  
Anthony Gambale  
Francis J. Gardner  
Mary Ann Gergits  
Brendan Gibbons  
Donato Giusti  
Cheryl Glasgow  
Joseph Gnias  
Edmund O. Goll  
Ann Good  
Anthony Goodwin  
George Gorman  
Gerard A. Goulet  
Rita W. Graczyk  
Richard Graff  
Great Valley Women's Club  
Maria Gregorio  
Perry L. Habecker V.M.D.  
and Gail Habecker  
Patrice A. Haines  
Ralph Hall and Cinda Hall  
Charlotte Hameka  
Mary Karen Harper  
Katherine Healey  
Anne Hearn  
Doreen M. Heath  
Jeff Heim



**Pictured:** Nursing Alumni Reception

Report includes gifts from 7/1/21 to 6/30/22. Every effort has been made to ensure accuracy. We apologize for any errors or omissions made in donor listings. † Indicates deceased



John A. Hendricks  
 Michael Hendrixson  
 Wendy W. Hibberd  
 Rev. Gregory J. Hickey  
 Kathryn Hildebrand  
 Mary Alice Hinerman  
 JoAnn Hino  
 Timothy Hock and Sally Hock  
 Howard E. Hoctor  
 Daniel Holland  
 Maria Holland  
 Perry Howell  
 Patricia H. Imbesi  
 Brittany Irwin  
 Philip Jaurigue  
 Eric R. Johnson  
 Ronald Juwa  
 Janet Fenton Kane, Ed.D.  
 Barbara Karpovich  
 Colleen Katzin  
 Robert A. Kearns, Sr.  
 John Keenan  
 Anne Marie Kelly  
 Margaret Kelly  
 Paula Kern  
 Ross Kershey  
 Cynthia G. Knisley  
 Denise Q. Kossuth  
 Stanley Kotzen and Sharon Kotzen  
 Rita G. Kovacs  
 Dale Z. Krauchick  
 Thomas Kreuzberger  
 Jerrold Lakoff  
 Janice Lawrence  
 Margaret M. Layden  
 Diane Lieser  
 Beth K. Liss  
 Todd Little  
 Gerrie Long  
 Madeleine Long, M.D.  
 Katherine Lovett  
 Earlin Lutz, Ph.D. and Marilyn Lutz  
 R. Terence Lynch  
 Jayne Lytle  
 Diane M. Malnak  
 Malvern Preparatory School  
 Kathleen O. Marshall  
 Linda Martens  
 Rebecca Martin  
 Diane R. Mattiford  
 Roberta Matz  
 Phil Mayer  
 Rose Mary Mazur  
 Marjorie M. McCall  
 Jennifer McCurry  
 Jeanne McFeely  
 Keith McLaughlin  
 Roberta McManus

Sister Virginia Assumpta McNabb, IHM  
 Gerald J. McNeff  
 William Meehan  
 Gerald Mello  
 Christine E. Mellon  
 Sonia M. Melville  
 Kathryn Mendelsohn  
 Joan Menuchi  
 Leon Miamiadian  
 Gary Michelson  
 Thaddeus M. Midas, Ph.D.  
 Jessica Migrala  
 Jack Miller  
 Lawrence C. Miller, D.M.D.  
 Charlene Millheim  
 David Mingey  
 Anthony Montagnolo  
 Olive Monye  
 Edward P. Mooney  
 Linda Morin  
 The Most Reverend Robert Morneau  
 Robert Mundy  
 George W. Murphy  
 Michael Neeb  
 Edward Nelson  
 Diane Nescio  
 Lewis E. Neumann, Ph.D.  
 Katie C. Newell  
 Francis Olbrych  
 Tom O'Reilly and Janet O'Reilly  
 Jude D. O'Shea  
 Jennie Palumbo  
 Mike Parrucci  
 Donald F. Parsons, Jr., J.D.  
 and Ethel B. Parsons  
 Gerald J. Parsons  
 and Eleanor Parsons  
 Leo D. Parsons and  
 Maryanne M. Parsons  
 Richard M. Parsons  
 and Claudia Parsons  
 Robert L. Parsons, D.O.  
 and Marilyn A. Parsons  
 Erach Patel and Fatima Patel  
 André Payton  
 Laila Payton  
 Rob Perry  
 Brad Petersen  
 Craig Petersen  
 John Petersen  
 Virginia Petersen  
 Barbara Pettinos  
 Donna C. Pierce  
 Charles Pitale  
 Michael Polifko  
 Lisa Pope  
 John W. Punk  
 Ruth Rainer

Rebecca Ramos  
 Joseph Rava  
 Barbara Reeves-Cohen  
 Andrew T. Reynolds  
 Emily Ricchi  
 Sharon R. Richardson  
 Martin Riehl  
 Carl C. Riley  
 Rae Roeder  
 Elsa Roellig  
 Janet L. Ross  
 Bertrand Rottkamp  
 Cathy Rush  
 George P. Sabol  
 Saint Pius X Convent  
 Samantha Santee  
 Nancy Satterfield  
 Lilia Saucedo  
 Robert J. Saum  
 Diane Schantz  
 Carol Scheifele  
 Mary Jane Schultz  
 Susan Schultz  
 Janet Sette Bloom  
 Maura J. Sheehan, Sc.D.  
 Robert R. Shock  
 Tracy Sidoriak  
 Zoe Singer  
 Sisters, Servants of the  
 Immaculate Heart of Mary  
 Barbara L. Sliker  
 Jeannie Smith  
 Kent Smith  
 Brenda M. Spells

Barbara Stallman  
 Donna Starrett  
 Suzanne Starrett  
 Derek C. Stedman  
 Barbara Steff  
 Mary Ann Stewart  
 Megan Stumpf  
 Howard Sundwall  
 Patricia Sylvester  
 Don Tenerowicz  
 Kenneth B. Tenley  
 Joanne T. Tesar  
 James J. Thatcher  
 Michael Tiagwad  
 Stephanie Trinkl, D.N.Sc.  
 Jaan Troitenier  
 Maureen Turley  
 Andrew Valenci  
 Rev. Samuel A. Verruni  
 Villa Maria Academy  
 Cecelia L. Wade  
 Pete Walters  
 Mary M. Wehrmann  
 Barbara Wexler  
 Judith V. Witt, Ph.D.  
 Therese Woodman  
 Anne F. Yacovino-Florian  
 John Yetzko  
 Norman L. Yost  
 Glenna L. Young  
 John Zabinski



*Pictured: The Silver Macs Sips & Dips Event*

*Report includes gifts from 7/1/21 to 6/30/22. Every effort has been made to ensure accuracy. We apologize for any errors or omissions made in donor listings. † Indicates deceased*



**Pictured:** The Maxis Society Reception

## PARENT GIVING

The following current parents and parents of alumni generously supported Immaculata University during the 2021–2022 fiscal year.

Anonymous (2)  
 Winifred Alogna  
 Frank X. Altieri, III and Desiree Altieri  
 Ruth Bradley Arata '82 and Robert D. Arata  
 Sally Kerigan Austin '63  
 Patricia Hearing Backer '72 and Warren Backer  
 Ruth Ann McCahon Baney '59, '93 M.A.  
 Michael P. Barrett and Carlyn V. Barrett  
 John M. Bartow and Vinnie Anne Bartow  
 Debra Lynn Beam '12 and James L. Beam  
 Michael Beattie and Christine Beattie  
 Nancy McDermott Beatty '82 and Michael D. Beatty  
 Clint S. Beckley and Maria Beckley  
 Vivian Leigh Beideman  
 Kevin J. Bellizio and Lisa A. Bellizio  
 Patricia Belmont  
 Matthew J. Berg and Tammy Berg  
 Gennaro Bifulco and Theresa Bifulco  
 Julio C. Falcon, Sr. and Kathleen Bonner  
 Gregory J. Brackin and Megan L. Brackin  
 Clinton H. Breckley and Joan T. Breckley  
 David W. Brennan '03 Ed.D. and Deborah A. Brennan  
 Lawrence H. Brent and Gina H. Brent  
 Virginia Feller Brosius '80  
 Angela E. Bruce

Andrew J. Brunner †  
 Michael Campbell and Gloria-Jean Campbell  
 Stephen P. Carter and Patricia A. Carter  
 Thomas C. Castner, '07 Ed.D. and Joanne C. Castner  
 Mark D. Chesnik and Barbara A. Chesnik  
 Michael Ciarlante and Patricia Ciarlante  
 Nora C. Cincotta  
 Roger L. Sharp and Monique J. Cioci  
 Dolores Gibson Cipolone '58  
 Patricia Stranen Connelly '70 and Gerard J. Connelly  
 Francis X. Connors and Dolores M. Connors  
 James E. Cooper  
 Rosalind Crews  
 Kevin Crowding, Sr. and Dawn Crowding  
 Stephanie Wham D'Amico '88  
 Ann Rudolph Dean '63 and Anthony Dean  
 Patricia DeLucia  
 Carolyn Johnson DiFilippo '86 and Thomas P. DiFilippo  
 Greg E. Doerr and Barbara Ann Doerr  
 Graciela Gil Donovan-O'Donnell '69 and Jim O'Donnell  
 Pedro M. Dossantos and Teresa M. Dossantos  
 Edward F. Dudley and Georgia Dudley  
 Robert Dunham and Nancy Dunham  
 James Andrew Dwyer and Anna Marie Dwyer  
 Margaret Erickson Menton '78  
 Elizabeth Gotshall Faunce '90, Ph.D. and James G. Faunce, IV  
 Michael Flood and Kathryn Flood

Florence Florez  
 Eugene Fogarty  
 Frank Fontanetta, Jr. and Ameer Sheth  
 George Forman and Annette Ricciuti Forman  
 Cindy Fox  
 Frederick J. Frevert and Maureen Frevert  
 Roseanne Tramo Gale '75 and Joseph M. Gale, Sr.  
 Joan Raidy Gallagher '51  
 Nora P. Gammon '88  
 Hilliard Gardner and Leatha Gardner  
 Mary Anne Bensinger Gearing '63  
 Lynn F. Giltinan  
 Richard L. Girkin and Nancy Girkin  
 Catherine R. Schwarz Gold '71 and James Gold  
 William R. Gotwals and Susan Gotwals  
 Dominic W. Gramig and Maria F. Gramig  
 Robert S. Gwin and Ruth Anne Gwin  
 Gregory Hagen and Maria Hagen  
 Julia A. Fogarty Hahn '83 and James P. Hahn  
 William Harkins and Marie Harkins  
 Rita Bensinger Hartleroad '67  
 Elaine Hartman  
 Helen C. Troy Hayes '57  
 Russell C. Heasley '04 and Melissa Heasley  
 James E. Hermansen and Michele A. Hermansen  
 Gregory Hislop and Donna Hislop  
 Kathleen A. Hoffman  
 Joseph E. Hutter and Mary Anne Hutter  
 John E. Isselmann and Margaret M. Isselmann

James Jacobs and Joanne Jacobs  
 Joan B. Johnson  
 Joseph P. Jones and Wendy Jones  
 Donald Kamp and Roseann Kamp  
 Joseph Keenan and Rosemarie B. Keenan  
 Robert Bruce Kern and Joan Kern  
 John D. Kohutka and Danielle A. Kohutka  
 Walter S. Kuczynski and Andrea Aiken Kuczynski  
 Yvonne M. Falcon Kuemmerle '63 and Walter Kuemmerle  
 Margaret Lacey, Ph.D.  
 Bartholomew C. LaGrassa  
 Robert K. Leardi, M.D.  
 Marie A. Lentz '02, '14 M.A. and James T. Lentz  
 Francis A. Livolsi and Kimberly A. Livolsi  
 Robert Loughney and Eleanor Loughney  
 Ann M. Mackin  
 Margaret Bransfield Maguire '69 and Michael J. Maguire  
 Kevin J. Manning, Ph.D. and Sara Manning  
 Lucille Lamontagne Markle '67 and William J. Markle  
 Susan Markofski  
 Edward D. Matyas and Eugenie Matyas  
 Carol McCadden Mayer '79 and Louis J. Mayer, Ed.D.  
 Jo Anne L. McAdams '84, '87 M.A., '96 Ed.D. and Frank McAdams  
 Brett McAllister  
 Timothy McCunney and Barbara McCunney  
 Robert J. McDonough and Nora J. McDonough  
 Marliiss McGuinness  
 Barbara A. Majewski McHale '72  
 Gary McHugh and Suzette McHugh  
 Joanne A. McKee '04 and Bernard M. McKee  
 William J. Morgan and Kathleen M. Morgan  
 Barbara Mulgrew '75 and John P. Mulgrew  
 Holly Jean Schmucker Mullan '85 and Dennis Mullan  
 Michael Murtha and Patricia Murtha  
 John O'Brien and Nollaigin O'Brien  
 Marie Lyons O'Donnell '61  
 John J. Olock, Jr. and Diane Olock  
 JoAnne L. McAdams Osborn '84 and Edward T. Osborn, Jr.

Report includes gifts from 7/1/21 to 6/30/22. Every effort has been made to ensure accuracy. We apologize for any errors or omissions made in donor listings. † Indicates deceased



Theresa Major Payton '89  
and Christopher Payton  
Charles F. Peppersack and  
Deborah Peppersack  
Marianina Pletcher  
George Forman and  
Annette Ricciuti Forman  
Adriana Kalpas Riordan '67  
and John F. Riordan  
Jeffrey D. Rollison '09 Ed.D.  
and Sandra Rollison '06 M.A.  
Scott A. Rombach and  
Pamela J. Rombach  
Theresa Rudnicki-Jones  
Dennis T. Shannon  
Roger L. Sharp and Monique J. Cioci  
George E. Shelton '08  
and Karen Shelton  
Stephen F. Singer and Barbara Singer  
Ann Marie Conway Six '70  
Joseph D. Smola and Melanie Smola  
Joanne Korpanty Solecki '80  
and Thomas J. Solecki  
Michael Sotak and Cynthia Sotak  
Justin Sprock and Marie Sprock  
Paul J. Stabile, Sr. and  
Cheryl A. Stabile  
Virginia Quinlan Stach '71 and  
Vincent P. Stach  
John Stanley and Lynn Stanley  
Joseph V. Steff, Jr. and Jennifer L. Steff  
James A. Sterling, III and  
Anita Sterling  
Maureen T. O'Hara Stover '77  
and Jeffrey Stover  
Anne Campo Strasser '62  
Stephen Strazdus and Karen Strazdus  
Peter F. Subach and  
Christine M. Subach  
John Sulfaro and Gina Sulfaro  
Nancy Sunday

Robert M. Tafuro and Carol B. Tafuro  
William Telford, III and  
Nancy Lee Telford  
Mary McCloskey Terry '59  
Josephine Thompson  
Rita Timoney  
Sallie Ann Tuscai '15  
Barbara A. Virtue  
Lewis Walker and Ellen Walker  
Earl B. White, Jr.  
Teresa Fox White  
David D. Witulski and  
Elizabeth Witulski  
Edgar C. Worley, Jr.  
Frederick J. Woyach  
and Robin Woyach  
Jeff Wright and Carol Wright  
Susan Coffey Zern '87, M.D.  
John C. Zurek, Sr. and Nancy J. Zurek

## CENTENNIAL SPONSORSHIPS

We thank those who supported Immaculata University's Centennial Gala, held October 9, 2021, and Golf Invitational, held October 19, 2021. These generous donors provided support to the Parsons Science Pavilion Campaign.

**PLATINUM SPONSOR**  
Communications Test Design, Inc.

**GOLD SPONSOR**  
Parkhurst Dining  
Vigilant Compliance LLC

**MIGHTY MAC SPONSOR**  
Concord Advisory Group, LTD  
Independence Blue Cross

**GOLF & GALA SPONSOR**  
**Lead Sponsor**  
Crabtree, Rohrbaugh  
& Associates Architects  
**Registration Sponsor**  
R.C. Legnini Company, Inc.

**GIFT IN KIND**  
Communications Test Design, Inc.

## GOLF SPONSORSHIPS

Many thanks for the support of those who sponsored and/or participated in the 45th Annual Immaculata University Golf Invitational, held October 19, 2021, at Applebrook Golf Club. Proceeds benefitted the Parsons Science Pavilion Campaign.

**LEAD SPONSOR**  
Crabtree, Rohrbaugh  
& Associates Architects

**REGISTRATION SPONSOR**  
R.C. Legnini Company, Inc.

**FOURSOME SPONSORS**  
C. Caramanico & Sons, Inc.  
Clifton Larson Allen LLP  
Duane Morris LLP  
Hanover Supply

**TWOSOME SPONSORS**  
IPS Resource Group LLC  
MCS Group, Inc.  
PNC Bank N.A.

**SINGLE SPONSORS**  
Barry Isett and Associates  
Robindale Consulting LLC

**HOLE SPONSORS**  
Atlantic Refrigeration Company, Inc.  
CALECO  
CAPTRUST Financial Advisors  
Carter Mechanical  
Centric Business Systems  
of SE Pennsylvania LLC  
Chester Valley Engineers, Inc.  
Ellucian Company LP  
Great Valley Lockshop  
H & H Systems, Inc.  
Janitorial Management, Inc.  
Kroff Chemical Company, Inc.  
MARA Restoration, Inc.  
Richard M. Parsons and  
Claudia Parsons  
D. Payne Plumbing  
Heating & Air Conditioning  
Stenton Corporation

**GIFT IN KIND**  
RMS Graphics, Inc.

## STUDENT SCHOLARSHIPS

Scholarships are critical to Immaculata's ability to attract talented students and to ensure success for those with financial need. The following are the currently held annual and endowed scholarships and their student recipients for the 2021–2022 fiscal year.

### Laverne and Kathryn Tucker Alexander '31 Endowed Scholarship

Gabrielle Harner  
Talia Iacovetti  
Julia Levase  
Grace Lorenz  
Christiana Lyras  
Bailey Manion  
Joseph Martell  
Rita McDowell  
Laura McMonagle  
Tyler Mruczynski  
Olivia Thorpe



**Pictured:** Immaculata Down the Shore Event

Report includes gifts from 7/1/21 to 6/30/22. Every effort has been made to ensure accuracy. We apologize for any errors or omissions made in donor listings. † Indicates deceased

NOW AVAILABLE



IMMACULATA UNIVERSITY  
**LANTERNS**  
*of LOVE*

This holiday season you can honor, remember or acknowledge a loved one, classmate, alum or an entire class with a 'Lantern of Love' which will be displayed outdoors in Lourdes Circle from late November through early January. Lanterns will be adorned with a tag noting donor & honoree. Lanterns of Love are available for \$100 each, proceeds support Immaculata students.

Visit [bit.ly/iulanterns](http://bit.ly/iulanterns) for additional details.



**Eleanor Mahoney Apgar '61  
Endowed Scholarship**  
Karina Barcenas

**Rocco N. and Sara J. Borrelli  
Endowed Scholarship**  
Daisy Frias

**Judith Debnam Breen  
Endowed Scholarship**  
Ashley Smith

**Kathy Burke '79 Memorial  
Endowed Scholarship**  
Catherine Carey

**Business Advisory Board Scholarship**  
Hannah Clark

**Class of 1939 Scholarship**  
Ashley Keifrider  
Muminatu Koroma

**Class of 1948 Scholarship**  
Skylar Volz

**Class of 1960 Scholarship**  
Victoria Alameda

**Class of 1963 Scholarship**  
Jessica Wright

**Dolores Wiza Conoscento '52  
Endowed Scholarship**  
Tyler Tillery

**Gunard Berry Carlson  
Creative Writing Award**  
First Place: Caleb Willard  
Second Place: Gina Rufo  
Third Place: Abigail Yarrison  
Fourth Place: Cleo Hoey  
Fifth Place: Benjamin Figurelli

**Charles and Maris Denny  
Endowed Scholarship**  
Christian Distefano

**di Toro Family Endowed Scholarship**  
Trinity Revels

**Almira M. Doutt Endowed Scholarship**  
Julia Gillies  
Woori Kogh

**Draper Walsh Endowed Service Grant**  
Julia Darlak  
Aidan Doyle  
Logan Hughes  
Theresa O'Connor

**Estelle and Theresa K. Fagan '39  
Endowed Scholarship**  
Jessica Bowe

**Jane M. Feely Memorial  
Endowed Scholarship**  
Rebecca Bocock  
Kelsey Caldarelli  
Bryce Wiltbank

**Jada Gallagher '93 Memorial  
Endowed Scholarship**  
Kaleigh Dugan

**Alice Leisch Guarino '07 B.S.N.,  
'10 M.S.N. Endowed Scholarship  
for Nursing**  
Whitney Payne

**Missy Healey '79 Endowed Scholarship**  
Kyle Brown

**Sister Cor Immaculatum, IHM Scholarship**  
Emily Green

**IU Endowed Scholarship**  
Melissa Bakey  
Maxwell Cannon  
Caitlin Clayton  
Collin Hassay  
Olive Monye  
Olivia Wallace  
Rory Watson

**Independence Blue Cross Scholarship**  
Jeffrey Baldwin  
Shauna Bassett  
Heather Burns  
Nimmy Chacko  
Kimberly Chambers  
Kristine Dunkerley  
Rebecca Edgington  
Gillian Fennessey  
Alexis Gavina-Moreno  
Jennifer Grubb  
Amy Johnson  
Julianna Jones  
Kaitlyn Klitchko  
Itzayana Lara Lopez  
Escarlet Lara-Lopez  
Trinh Ma  
Meghan McKelvie  
Alexis Moore  
Colleen Moore  
Samantha Puia  
Kathleen Reddi  
Arianna Thomas  
Daisy Tito  
Lauren Vandenbraak



**Pictured:** The IU Centennial Celebration



**Sister Marie Albert Kunberger, IHM '51 and Family Scholarship**

Miranda Chinchar

**Jacqueline F. Lacoste Endowed Scholarship**

Emily Meyer

**The Maguire Scholarship**

Joseph Billetta  
Donovan Blair  
Isabella Carey  
Theresa Cerruti  
Payton Conard  
Sabrina Curran  
Gianna DeLong Giorgio  
Caitlyn Ferguson  
Julia Gillies  
Emely Jimenez  
Nicholas John  
Melody McGrogan  
Mary McKinney  
Kelly Nilan  
Alexis Raymond  
Nadia Rescigno  
Yuridy Rodriguez  
Timothy Tomlinson  
Shane Warner

**Anne and Timothy McCarthy Memorial Endowed Scholarship**

Lilia Biehl  
Mary Santoso

**Margaret Mary McHugh '89 Scholarship**

Courtney Floyd  
Molly Ulsh

**Linda Fredericks Michelson '66 Endowed Scholarship**

Kaitlyn Carter  
Madelyn Waksmunski

**Melanie A. Macko Miles '69 Dietetic/ Nutrition Endowed Scholarship**

Mikayla Ortiz

**Mary Ellen Quinn Miller '46 Scholarship Fund**

Berrangere Saintillien

**Sister Jane Anne Molinaro, IHM Endowed Scholarship**

Siera Cruz

**IU Music Scholarship**

Olivia Baker  
Julie Gilligan

**Saint John Neumann Endowed Scholarship**

Ciane McKelvy

**Monsignor Hugh J. Nolan Endowed Scholarship**

Jason Smiley

**Dr. Desmond J. Nunan, Sr. and Rev. Francis J. Walsh Endowed Scholarship**

Erin Schoiack

**Agnes O'Donnell Scholarship**

Kimberly Chambers  
David Risinger

**J. Robert O'Donnell Scholarship**

Ryan Pringle

**Office Depot Scholarship**

Melissa Carannante  
Matthew Deloreto  
Christopher Javier  
Matthew Kirkpatrick  
Philip Lyons  
Brennah Scott  
Morgan Seidita

**Catholic Philopatrian Literary Scholarship Fund**

Caitlyn Ferguson  
Shawn Rostucher  
Darwina Vaye

**Shirley Pinola Endowed Scholarship**

Tessa Kane

**Presser Foundation Scholarship**

Breanna Kratz

**Mary Ellen Quinn Miller '46 Scholarship Fund**

Kate Lafferty

**Rev. Bernard Ransing Memorial Endowed Scholarship**

Joseph Soliwoda-Doan

**Trieste Musa Rao '37 Scholarship**

Marchello Barile  
Caitlin Clayton  
Alexander Polidoro

**Jessica Lee Ricciardi Scholarship**

Alicia Eggles

**Mary Ann Scheuuing '68, Ph.D., J.D. Memorial Scholarship**

Andrea Petito

**W.W. Smith Charitable Trust Scholarship**

Gianna Bedwell  
Alexandra Bethman  
Charra Coleman  
Rema Ereifej  
Collin Foley  
Cori Harding  
Allison Hill  
Emma Markley  
Ciane McKelvy  
Josaleen Moyer  
Katy Newton  
Angela Reichwein  
Grace Sheeler  
Eliza Stowell

**Cheryl J. Thatcher '99 Endowed Scholarship**

Anna Freeman  
Julia Gillies

**Fred and Barbara '91 Travaglini Endowed Scholarship**

Matthew Rowles

Report includes gifts from 7/1/21 to 6/30/22. Every effort has been made to ensure accuracy. We apologize for any errors or omissions made in donor listings. † Indicates deceased

**Pictured L to R:** On the Road in Blue Bell, PA; Immaculata Cheer Squad



**Dr. Lina G. Vardaro Scholarship**

Gionna Altenderfer  
Joseph Biuso  
Gianna Caputo  
Lauren Gerstle  
Cameron Gleason  
Taylor Gustafson  
Allison Hill  
Tierni Hughes  
Stephanie Kelly  
Kaitlyn Klitchko  
Natalie Lunt  
Nicole McGhee  
Rachel Mcnamee  
Emma Mcnamee  
Emma Mercadante  
Tyler Plantarich  
Ziaphieth Rios  
Grace Sheeler  
Alexandria Sicari  
Samantha Sims  
Madeline Terry

**Karen Valyo, RN Memorial  
Endowed Scholarship**

Emily Pablo Medina

**Louis and Madeline M. Vassalotti  
Endowed Scholarship**

Alyssa Claycomb

**Antonina Rossomando Verdiani  
Endowed Scholarship**

Prince Tue

**Catherine Walsh and  
Helen Walsh Kramer Memorial  
Endowed Scholarship**

Jessica Gindle  
Ciani May

**WAWA Scholarship for  
Diversity and Inclusion**

Daisy Quiroz-Renteria

**BUSINESSES AND  
CORPORATIONS**

1100 WCP Enterprises LLC  
AmazonSmile  
Atlantic Refrigeration Company, Inc.  
Barry Isett and Associates  
CALECO  
CAPTRUST Financial Advisors  
C. Caramanico & Sons, Inc.  
Centric Business Systems  
of SE Pennsylvania LLC  
Chester Valley Engineers, Inc.  
Clifton Larson Allen LLP  
Communications Test Design, Inc.  
Concord Advisory Group, LTD  
Crabtree, Rohrbaugh  
& Associates Architects  
Duane Morris LLP  
Ellucian Company L.P.  
Great Valley Lockshop  
H & H Systems, Inc.  
Hanover Supply  
Herman Goldner Company, Inc.  
Hospital Central Services, Inc.  
IPS Resource Group LLC  
Independence Blue Cross  
Jacobs Music, Inc.  
Janitorial Management, Inc.  
Kroff Chemical Company, Inc.  
Legend Services, Inc.  
R.C. Legnini Company, Inc.  
Lockheed Martin Employees'  
Political Action Committee  
MARA Restoration, Inc.  
The MCS Group, Inc.

Meridian Bank  
Meyer and Associates  
Nave Newell, Inc.  
Office Depot, Inc.  
Parkhurst Dining  
D. Payne Plumbing Heating  
& Air Conditioning  
Pete's Produce Farm  
PNC Bank N.A.  
RMS Graphics, Inc.  
Robindale Consulting LLC  
Southeastern Consortium  
for Higher Education (SEPCHE)  
Stenton Corporation  
Tri-M Group LLC  
Tune-Up Network Enterprises LLC  
Utrcas, LLC  
Vigilant Compliance LLC  
Wawa, Inc.  
Worley's Home Services LLC

**FOUNDATIONS**

Robert H. and Ruth Guerin Bowman '45  
Charitable Foundation  
The Gunard Berry Carlson  
Memorial Foundation, Inc.  
Catholic Philopatrian Literary Institute  
Community Foundation  
of New Jersey  
George I. Alden Trust  
Goergen Foundation, Inc.  
Independence Blue Cross Foundation  
Maguire Foundation  
MECA The PAAL Program  
J. Robert O'Donnell Trust  
Oppasser Family  
Charitable Foundation  
The Pearl Foundation, Inc.  
The Presser Foundation

The Sandy Hill Foundation  
W. W. Smith Charitable Trust  
WSFS Community Foundation  
Herman O. West Foundation

**GRANTS**

Commonwealth of Pennsylvania  
Pennsylvania Liquor Control Board

**MATCHING GIFTS**

Bank of America  
Charitable Foundation  
Bentley Systems, Inc.  
The Boeing Company  
Eaton Corporation  
Elsevier Foundation  
Fiserv, Inc.  
Hershey Foods Corporation  
The Home Depot Foundation  
Johnson & Johnson  
Lockheed Martin Corporation  
Foundation Matching  
Gift Program  
Oracle Corporation  
PNC Foundation  
PPL Corporation  
PSEG Educational  
Matching Gift Program  
SAP America, Inc.  
TD Bank  
Truist Bank  
Verizon Foundation  
Wells Fargo  
Herman O. West Foundation

Report includes gifts from 7/1/21 to 6/30/22. Every effort has been made to ensure accuracy. We apologize for any errors or omissions made in donor listings. † Indicates deceased





**OCTOBER 7, 2022**

*The Immaculata University*

# AWARDS RECEPTION

*The Great Hall, Immaculata University*

For information on Awards Reception tickets or sponsorships, visit: [bit.ly/iuawards22](https://bit.ly/iuawards22)



**GOLF**  
INVITATIONAL

IMMACULATA  
UNIVERSITY

**OCTOBER 18, 2022**

# The 46th Annual Immaculata University Golf Invitational

*Applebrook Golf Club, Malvern, PA*

Visit [immaculata.edu/golf](https://immaculata.edu/golf) for ticket & sponsorship information





IMMACULATA  
UNIVERSITY

INSTITUTIONAL  
ADVANCEMENT

1145 West King Road  
Immaculata, PA 19345

COMING FALL 2022

MAKE YOUR IMPACT DURING  
**THE ANNUAL  
CHARTER DAY  
OF GIVING**

The Immaculata University Day of Giving & Online Auction  
*24 HOURS TO MAKE A DIFFERENCE*

**November 10, 2022**

Please check the website this fall for additional information,  
or email questions to [AlumniDept@Immaculata.edu](mailto:AlumniDept@Immaculata.edu).